

Επώδυνα σύνδρομα λεκάνης-πυέλου που δεν σχετίζονται με τις ιερολαγόνιες αρθρώσεις

ΠΑΝΕΠΙΣΤΗΜΙΑΚΟ ΓΕΝΙΚΟ ΝΟΣΟΚΟΜΕΙΟ ΚΡΗΤΗΣ
Εργαστήριο Ιατρικής Απεικόνισης

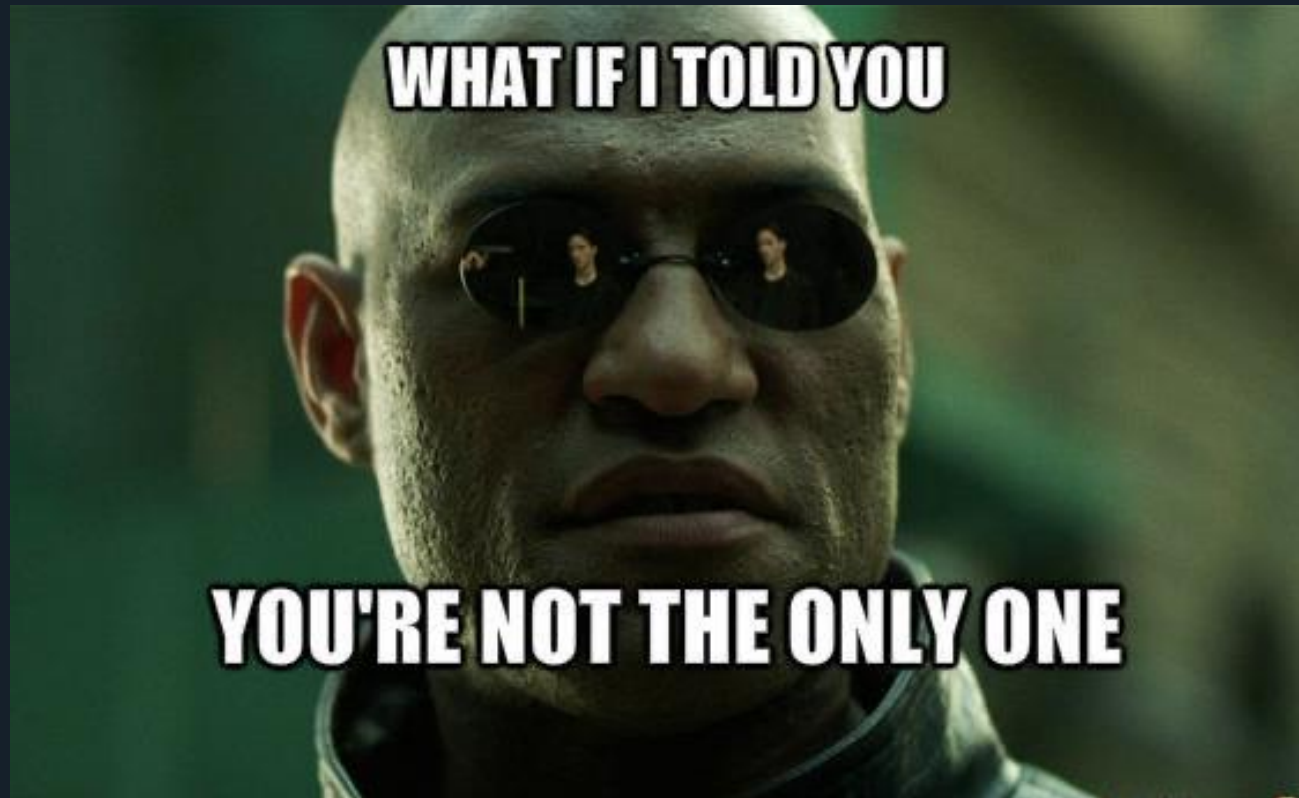
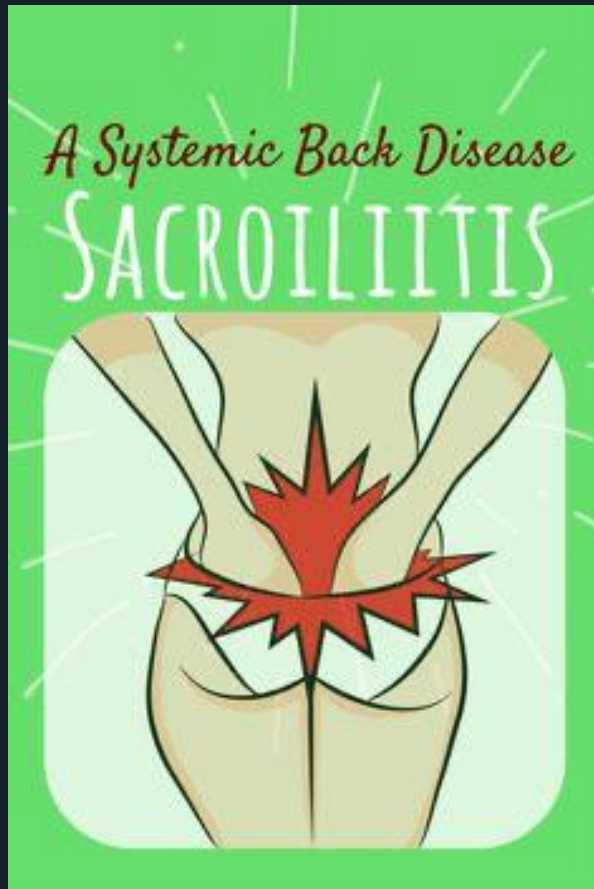
Κάκκος Γεώργιος MD, MSc
Εξειδικευμένος Επεμβατικής Ακτινολογίας

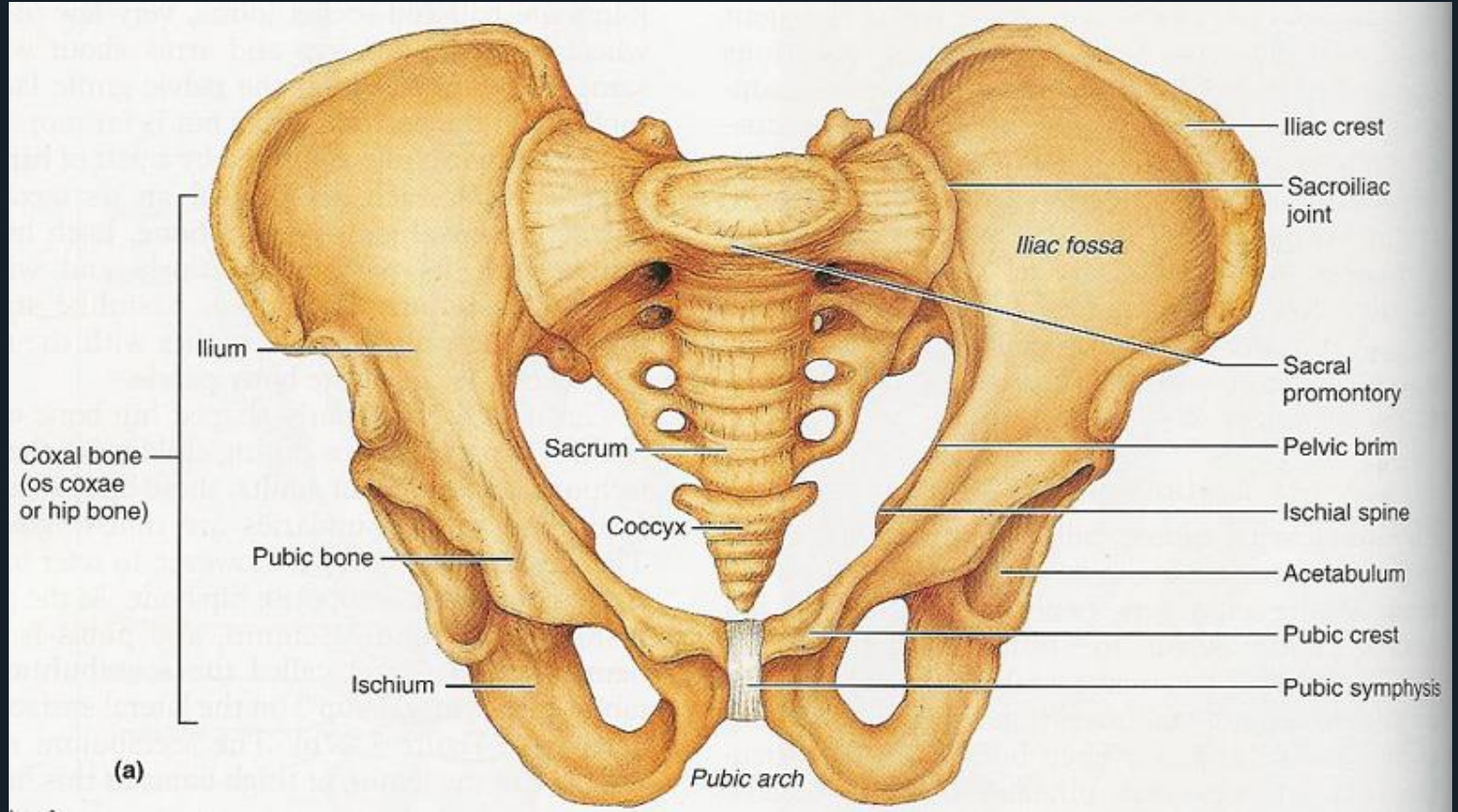
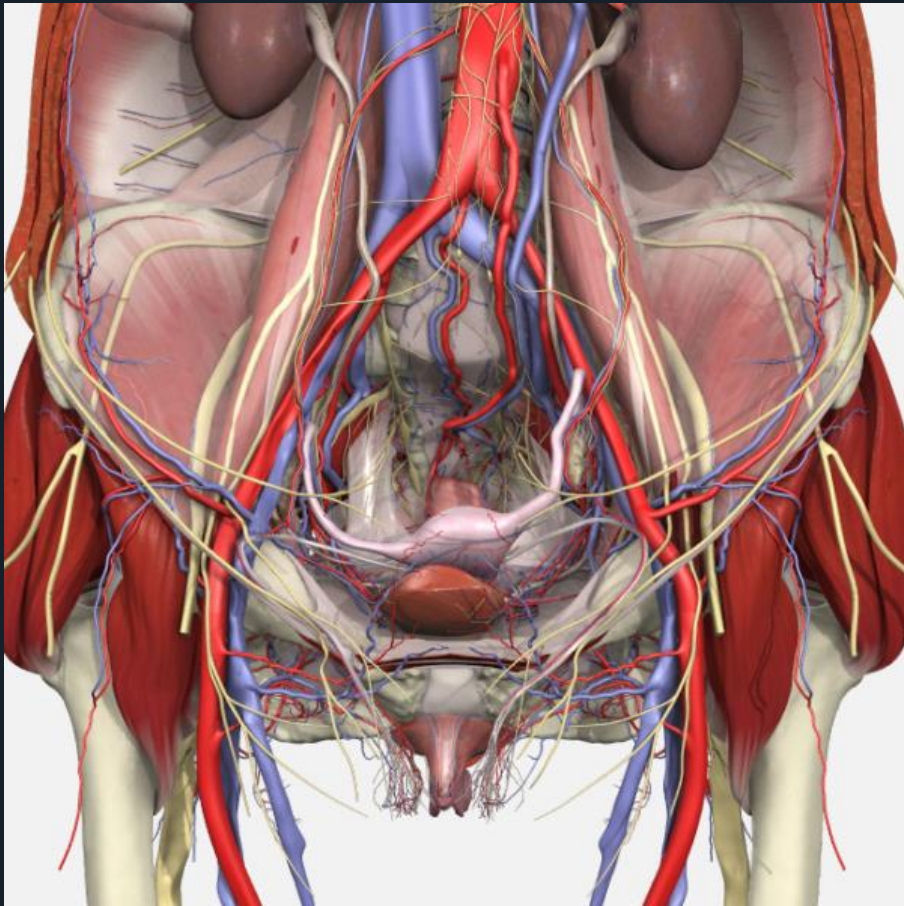


Table of contents

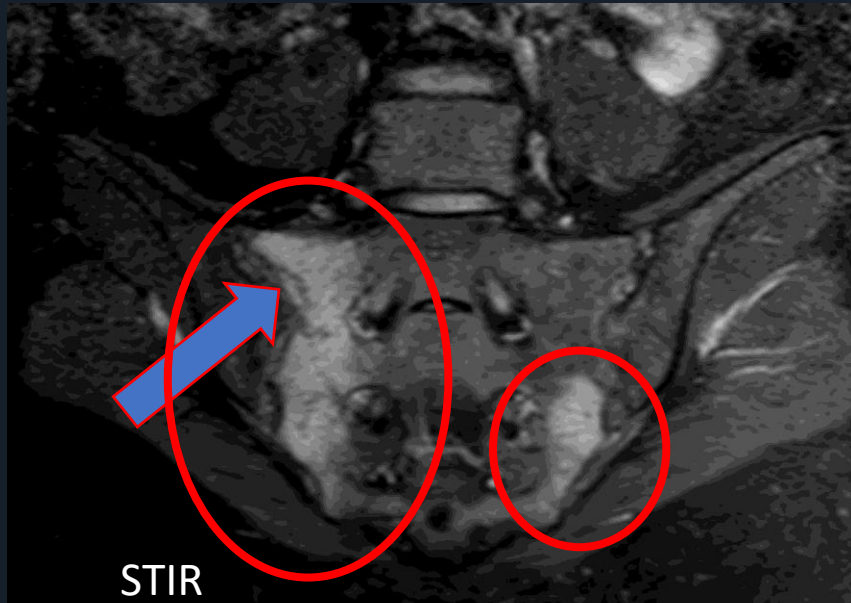
- Differential diagnosis of pelvic pain mimicking sacroiliitis
 - Bone related causes
- Cases
- Conclusions

Sacroiliitis - lone player?





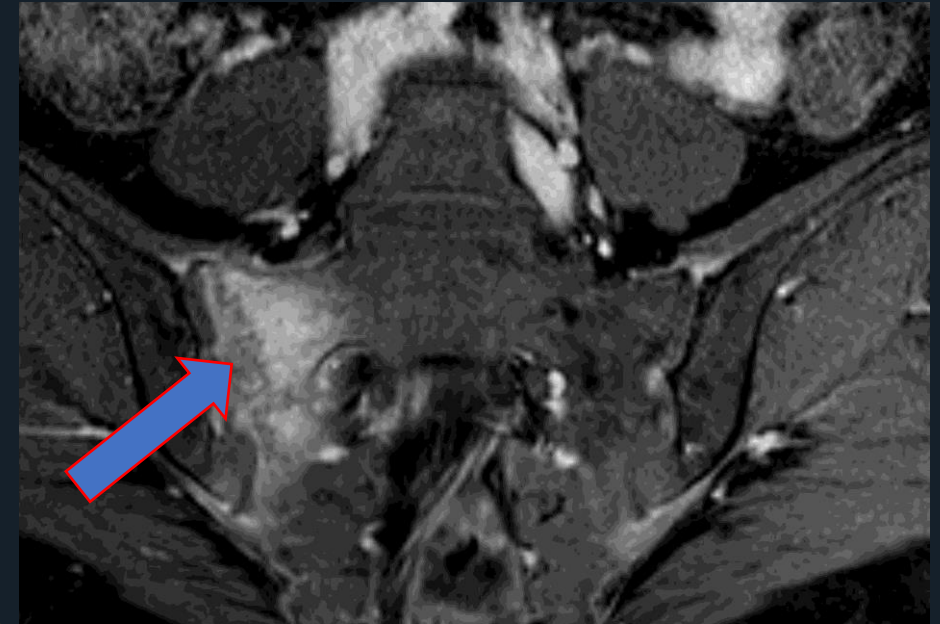
36F - Mountain trekking



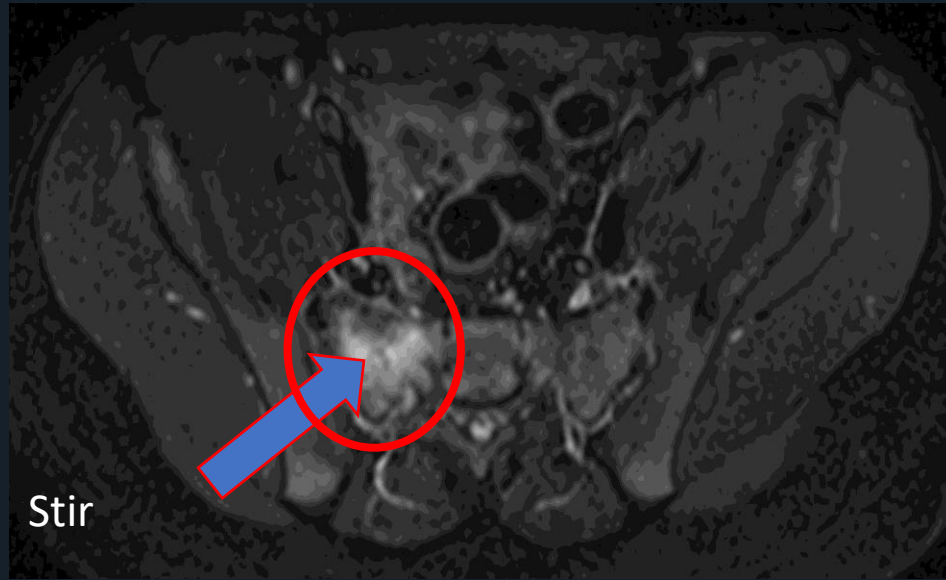
Stress fx (R)
Stress reaction (L)



Repetitive
trauma

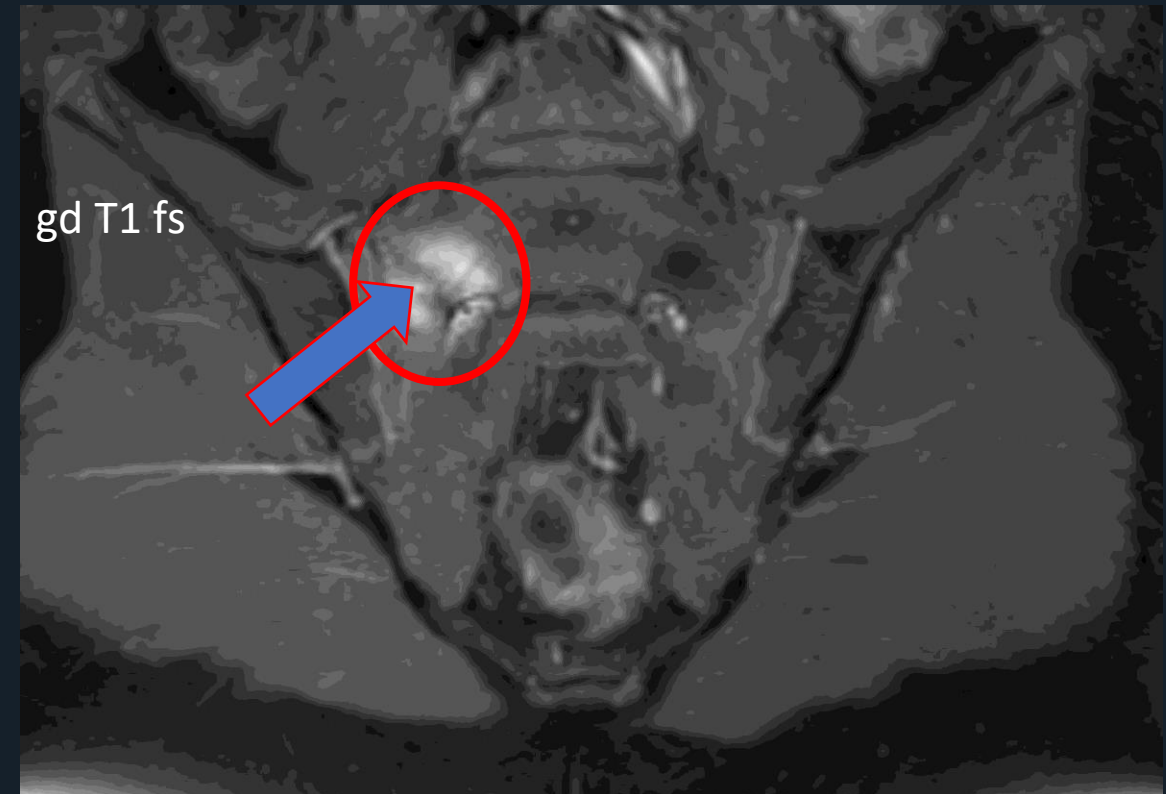
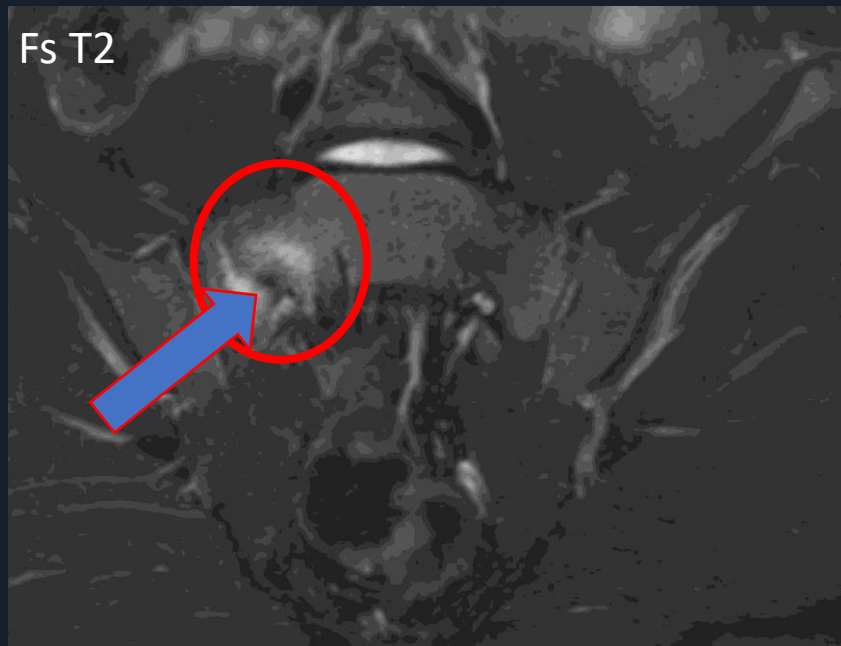


12M - Football academy



Repetitive
trauma

Stress fx (R)

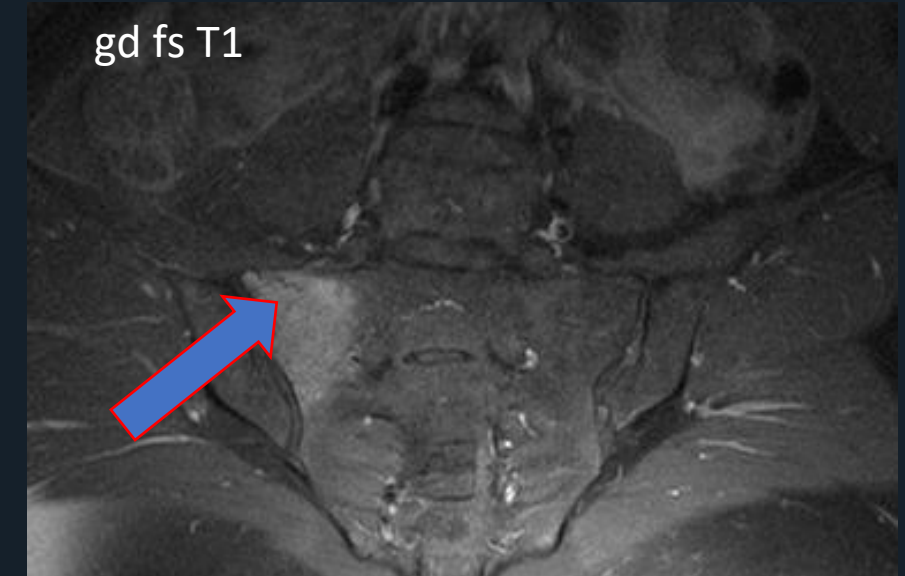
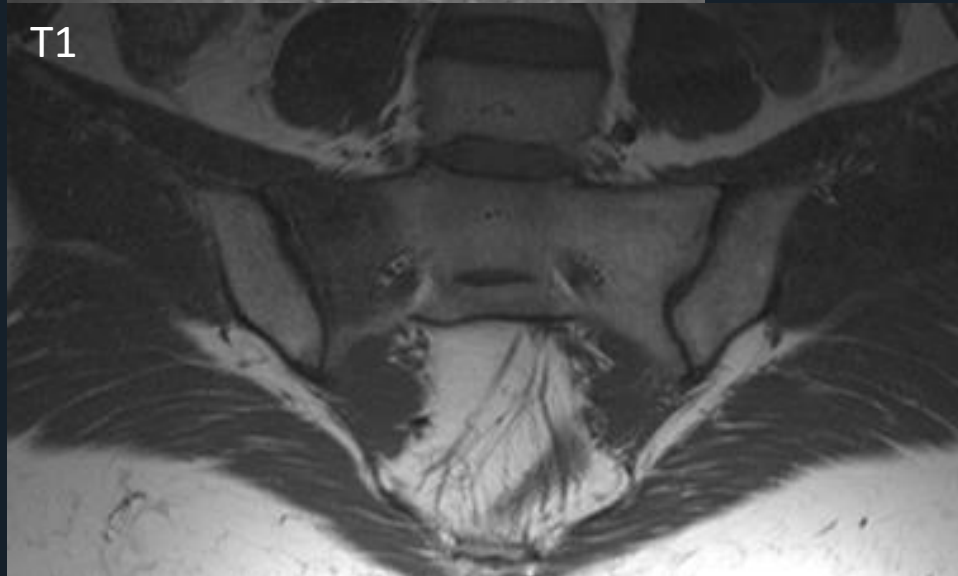
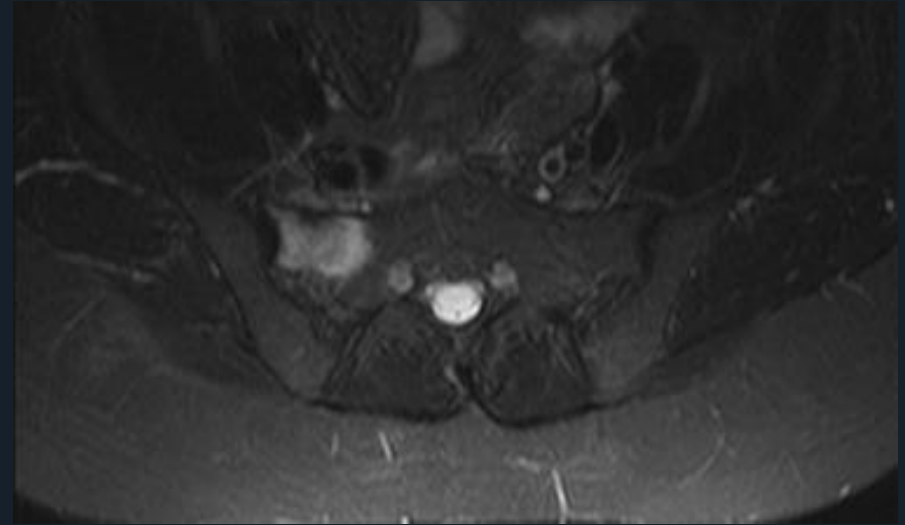


39F - early osteoporosis



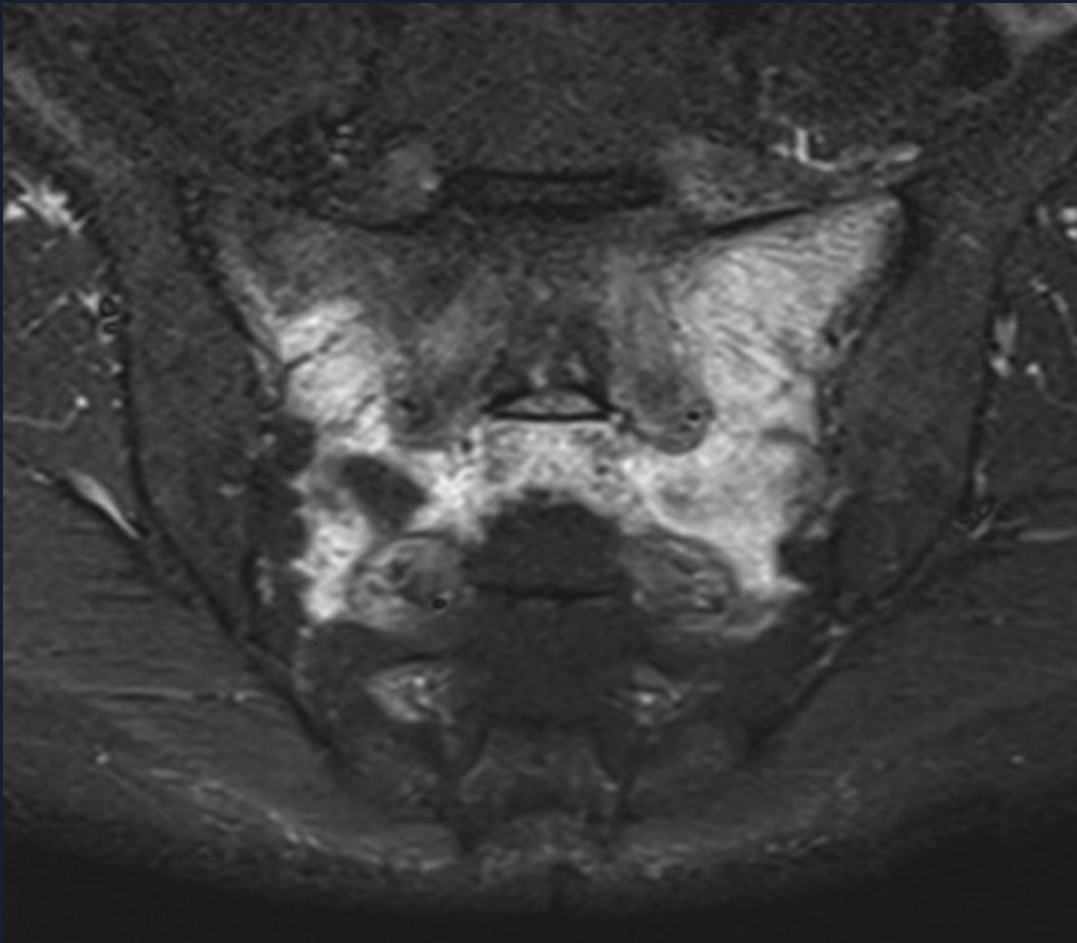
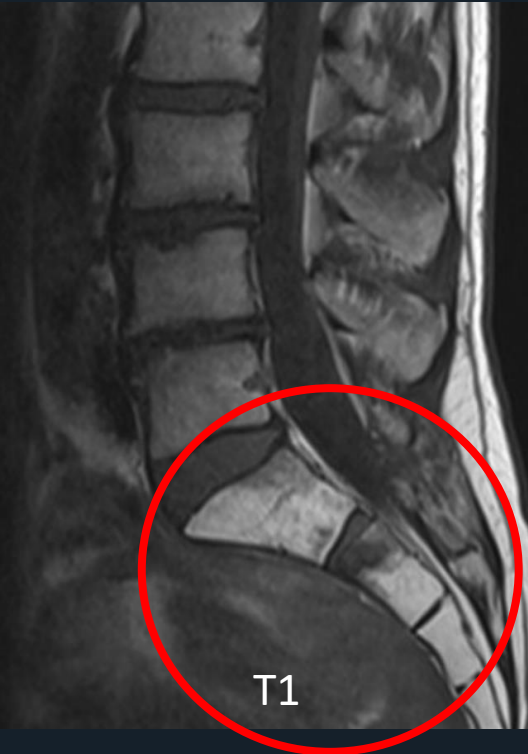
Insufficiency
fx

Metabolic
bone disease



71F - Rectal adenoCA, pelvic radiation

Insufficiency
fx



32F - recent pregnancy



**Osteitis
Condensans Ilii**

**Repetitive stress?
Chronic stress
response?**

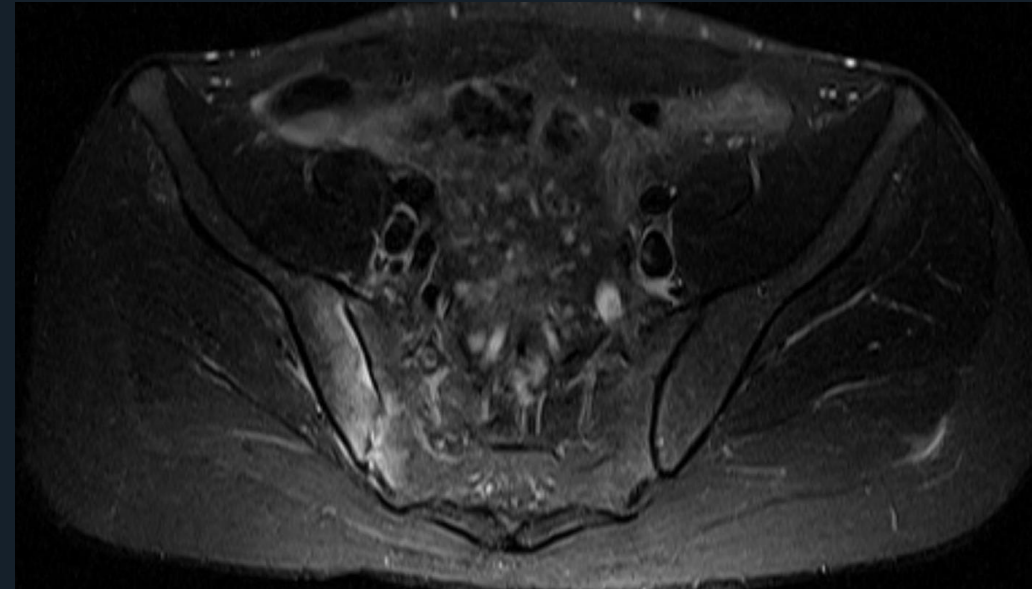
Pain <3%

24F - Upper resp. tract infection

Infectious



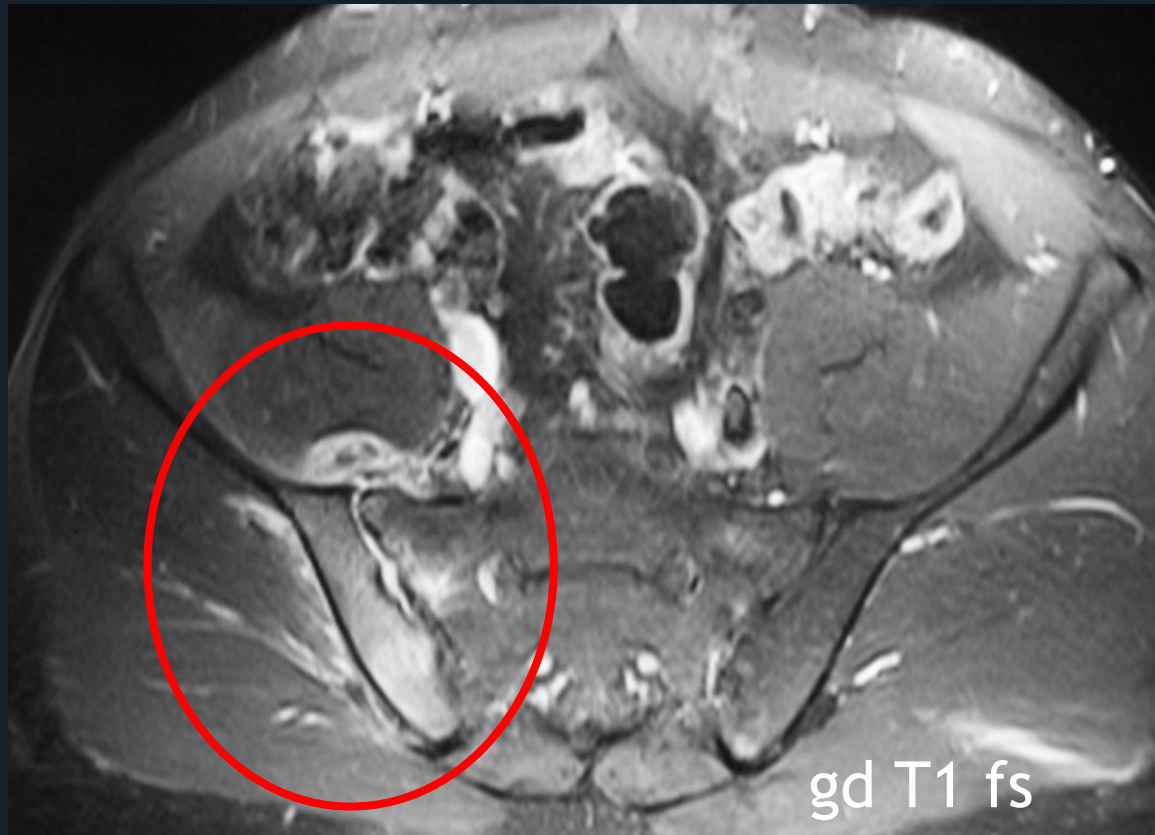
**Reactive
sacroiliitis**

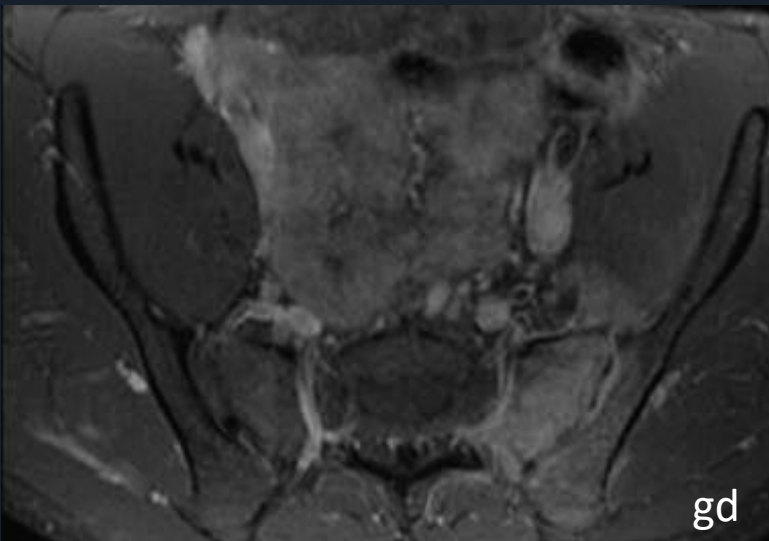
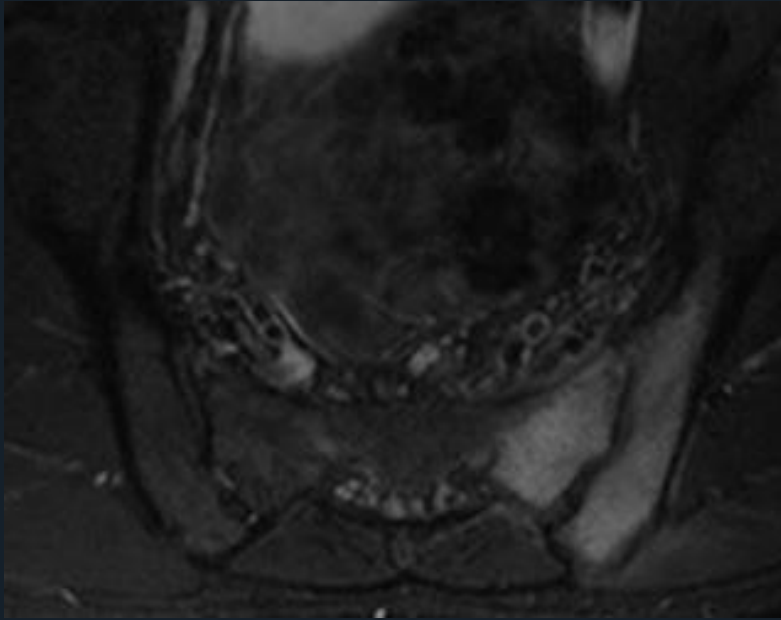


23M - shepherd - pain,
fever & malaise

Infectious

Brucellosis





Infectious

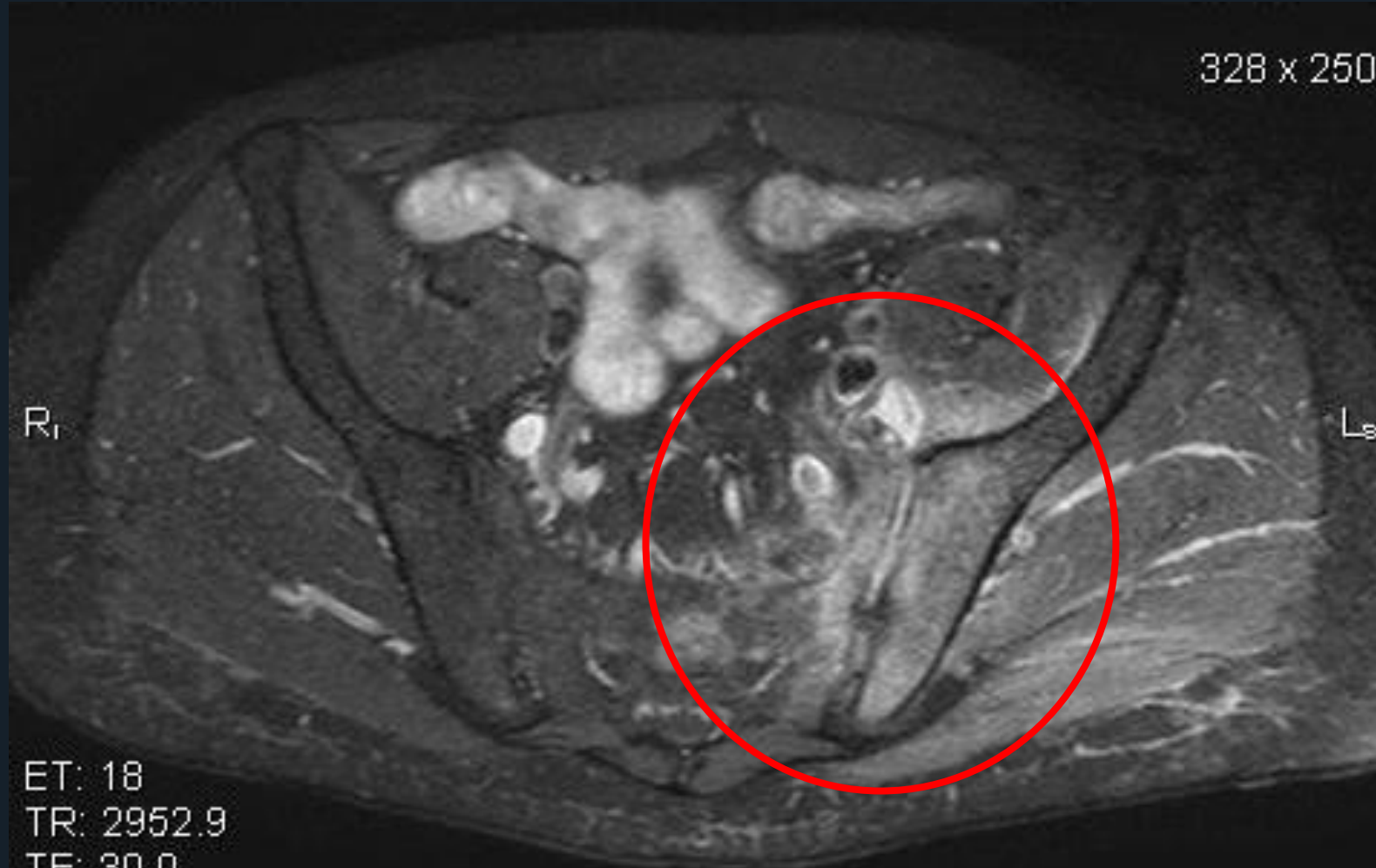
S. aureus

33M - IVDU

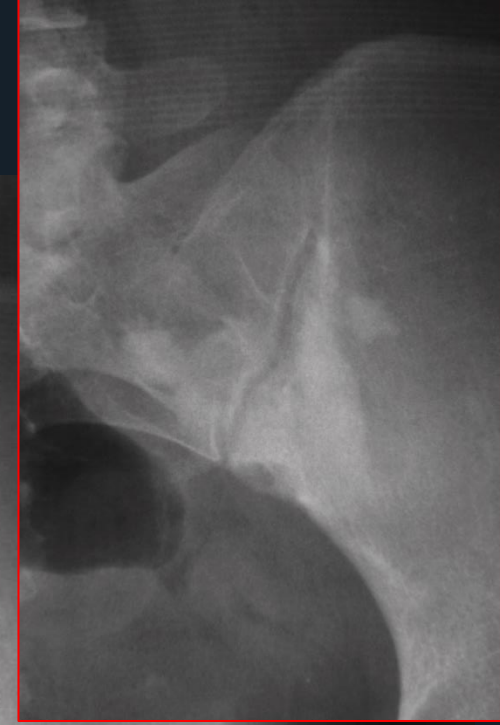
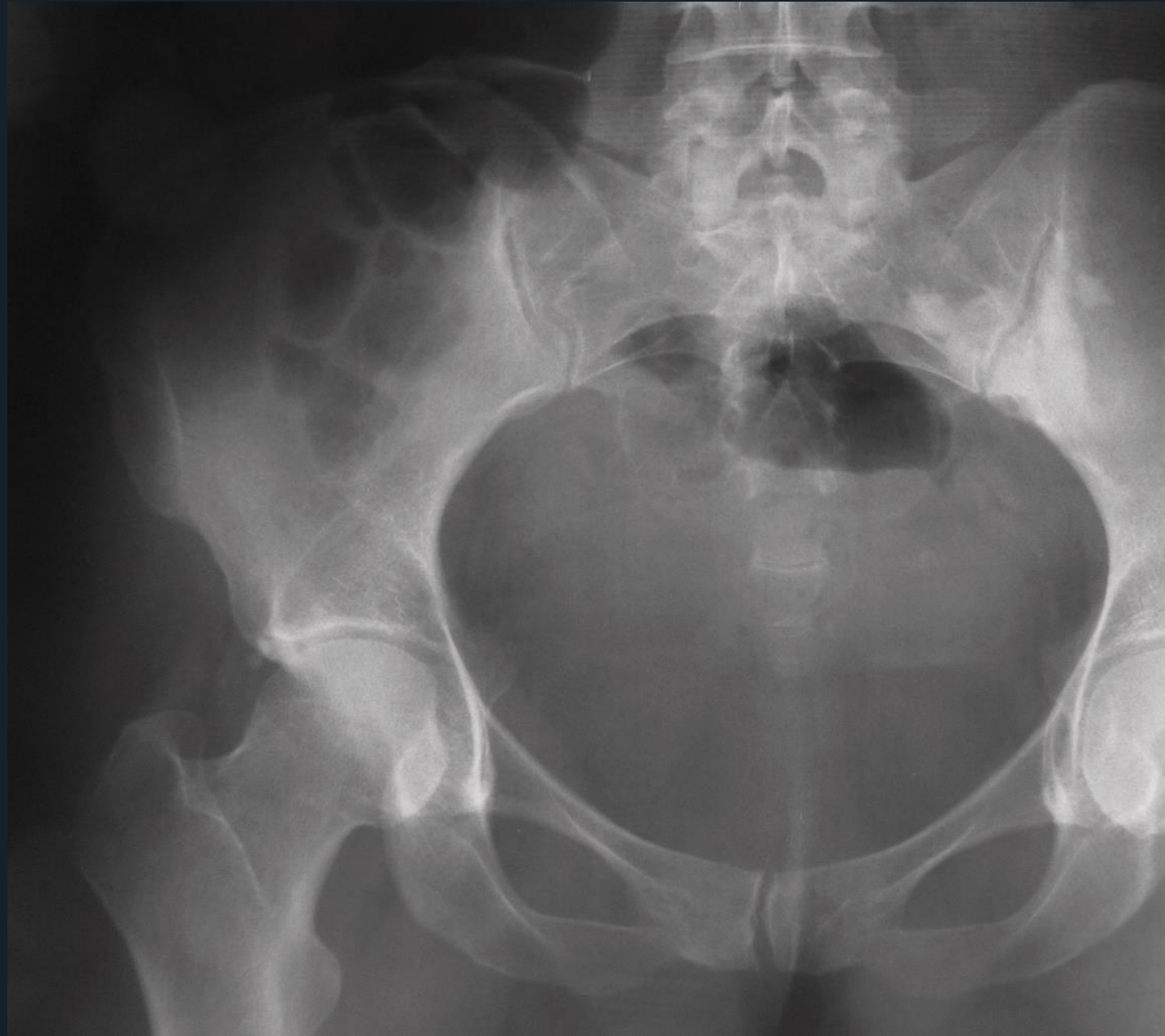
48M - Lymphoma

Infectious

*Pseudomonas
aeruginosa*

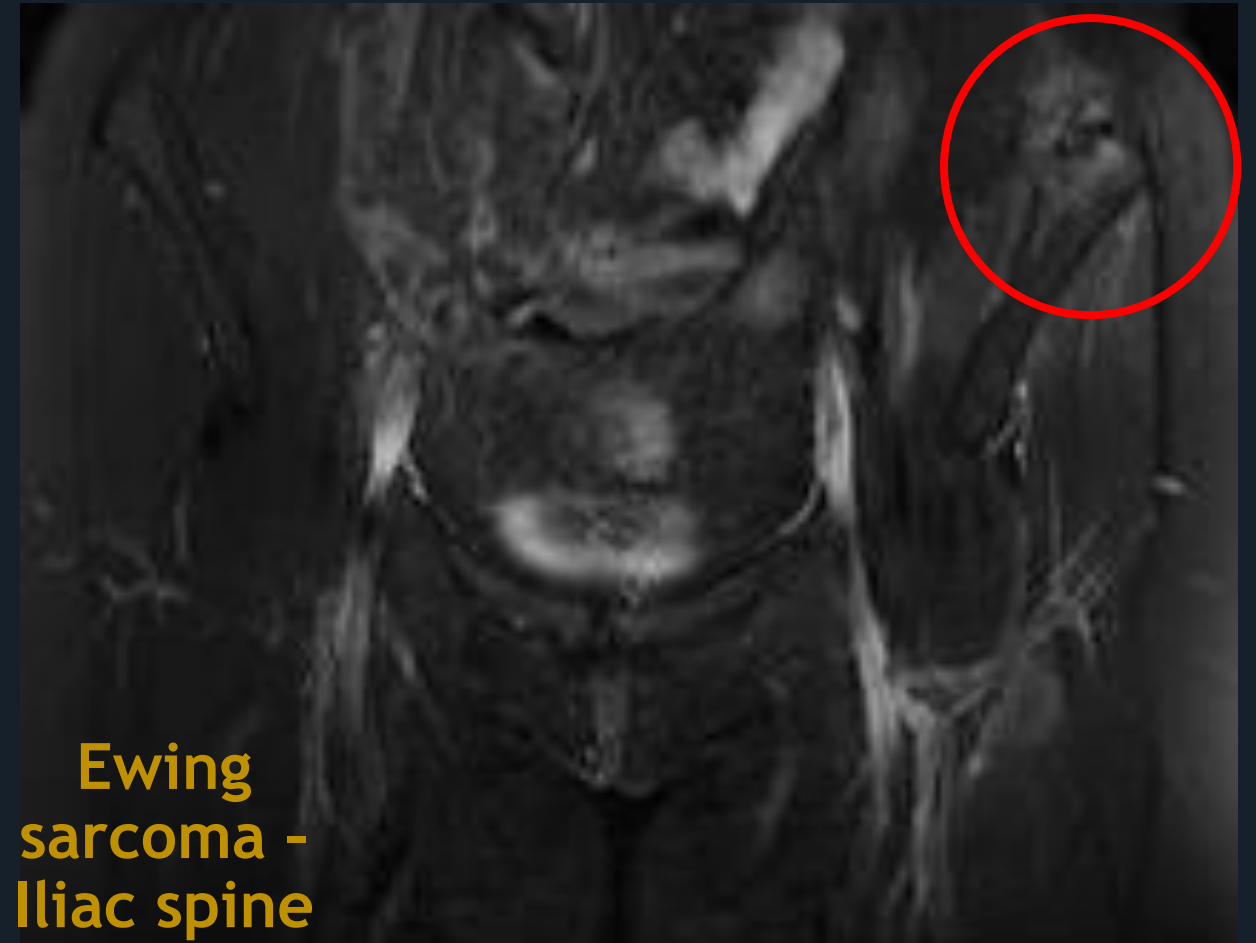


Melorheostosis (Leri disease)



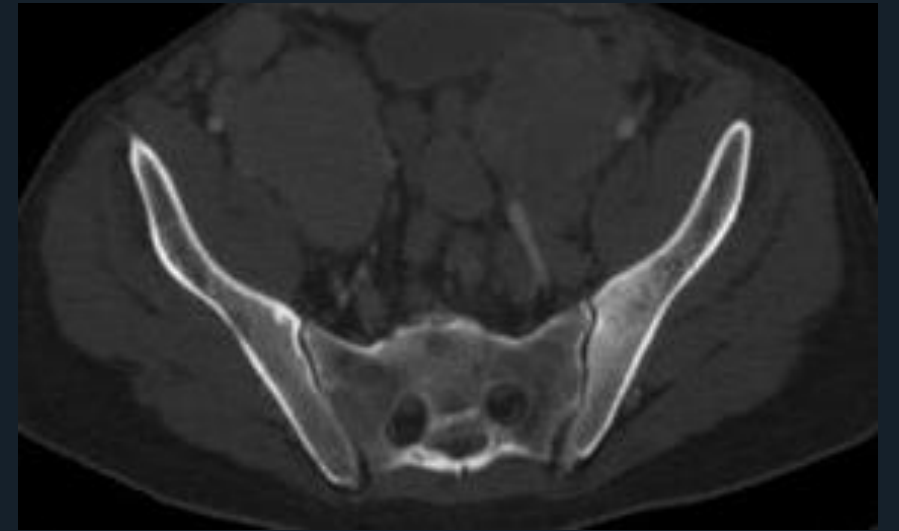
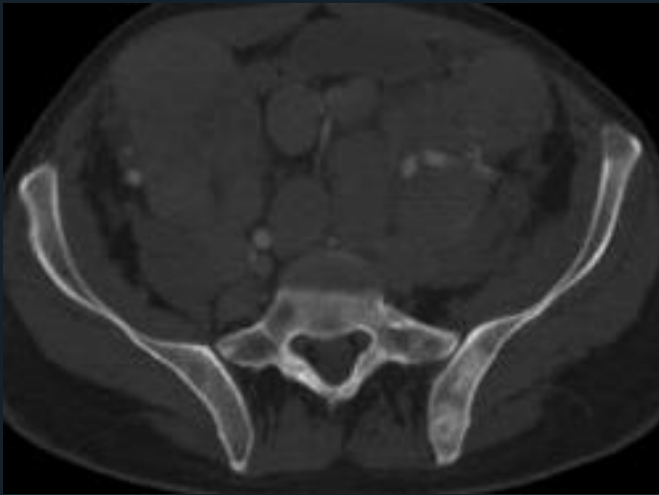
26F - night pain - low grade fever - high ESR

Neoplastic



41m - pelvic pain, Prostate ca

Neoplastic

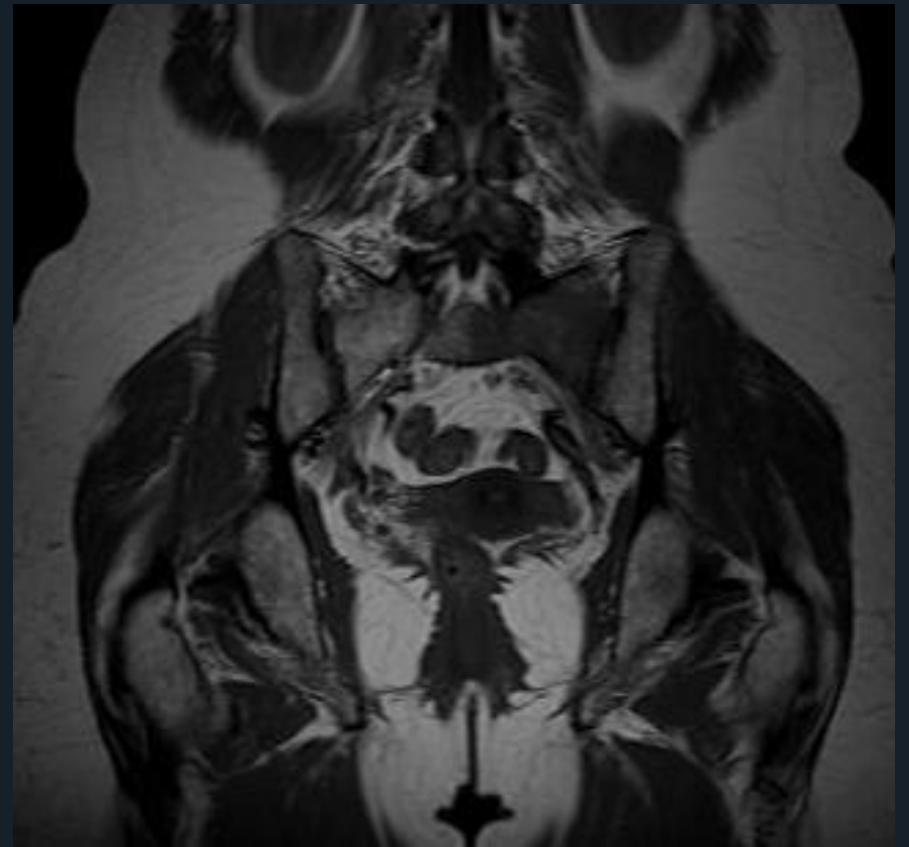
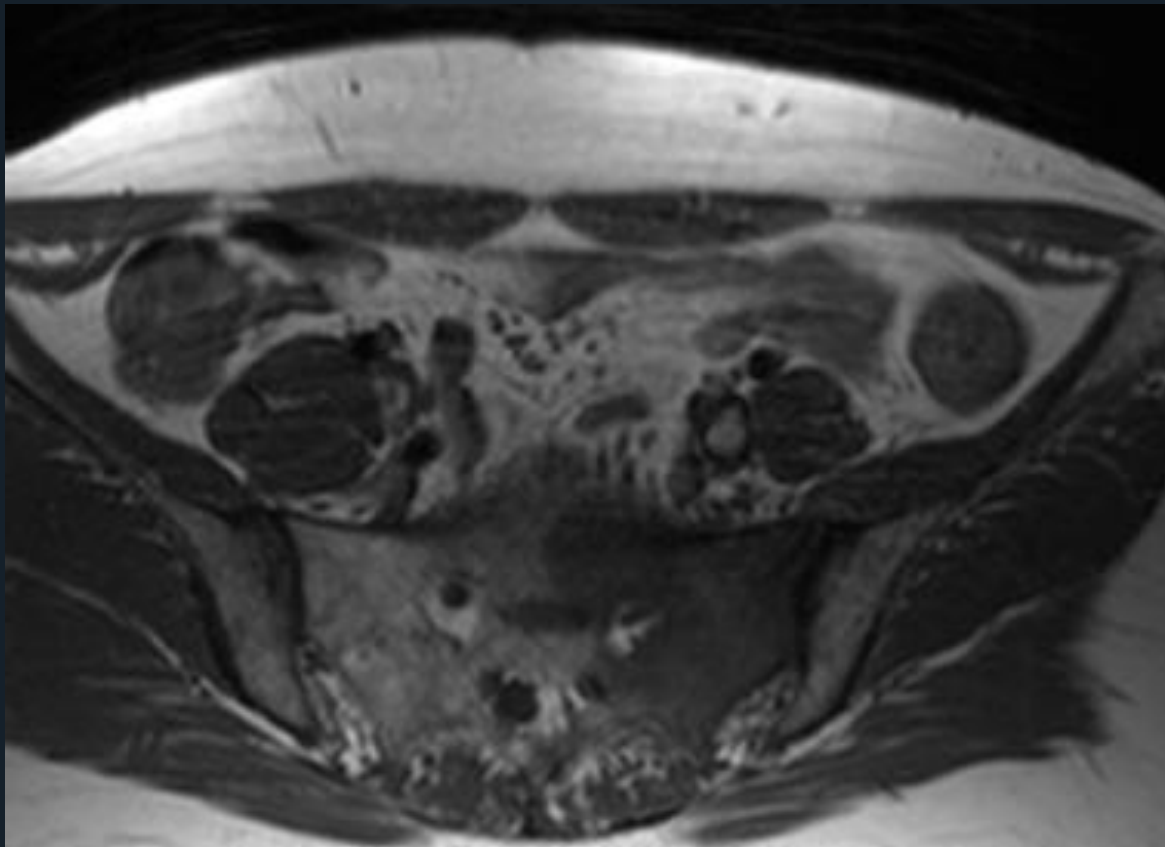


Mets

49F - ca breast

Neoplastic

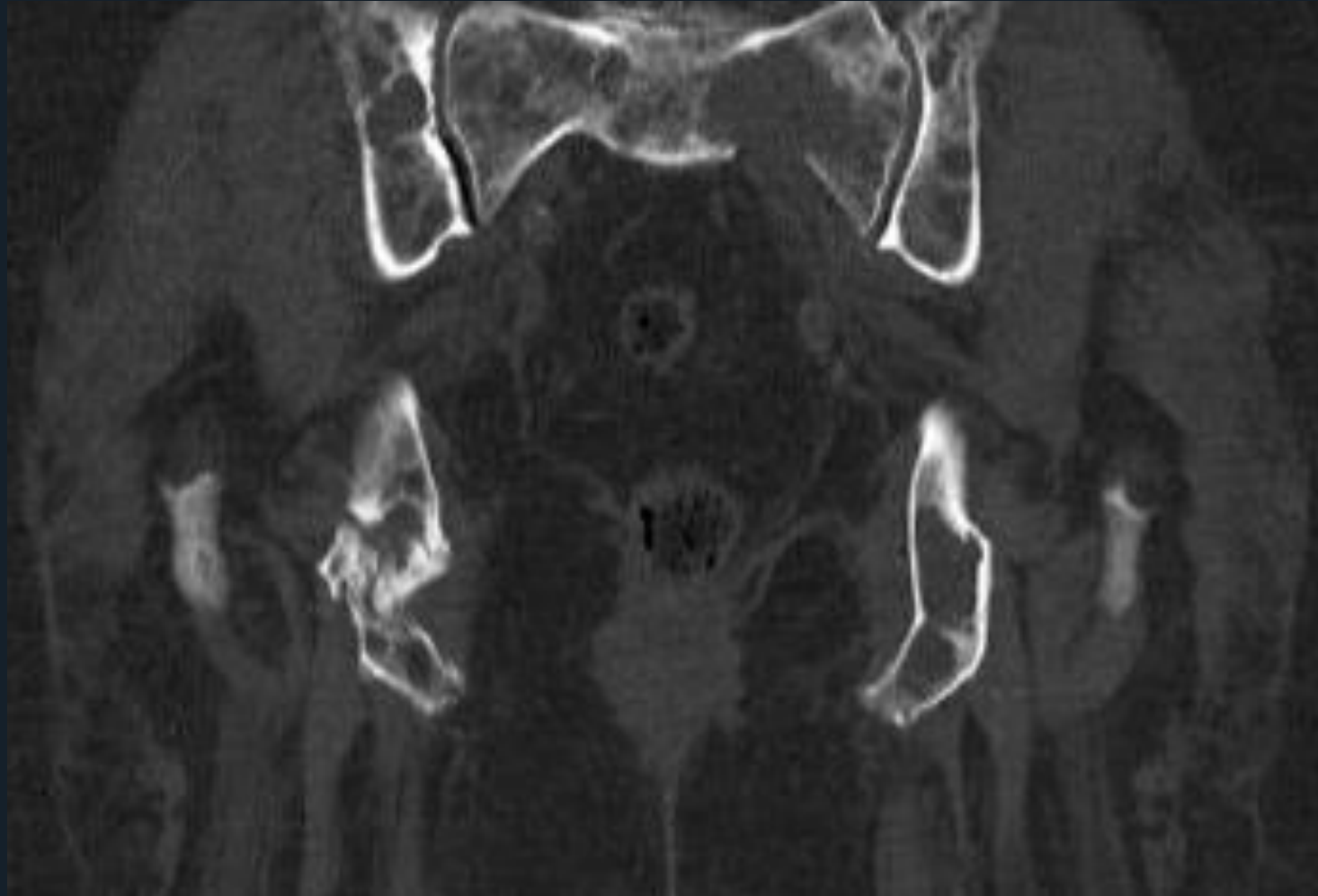
Mets



65F - pelvic pain

Neoplastic

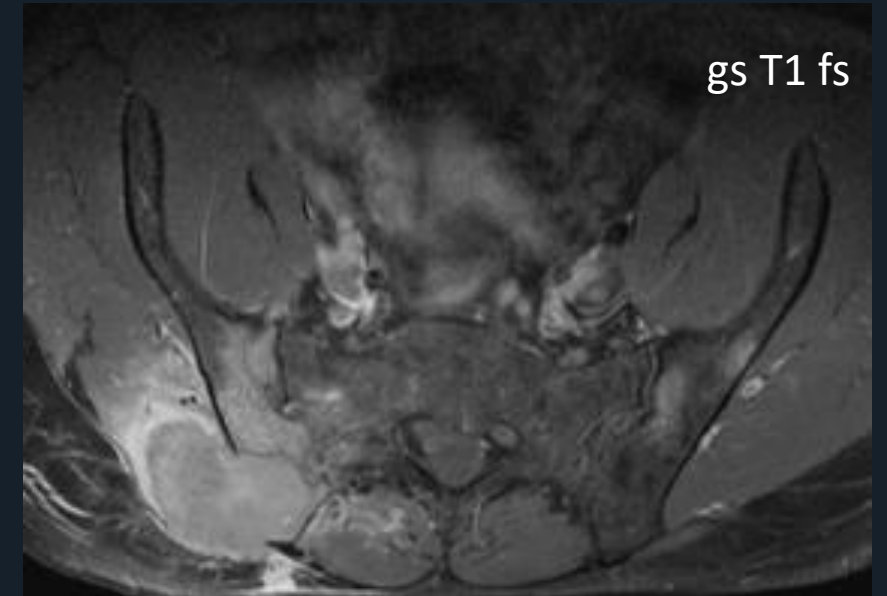
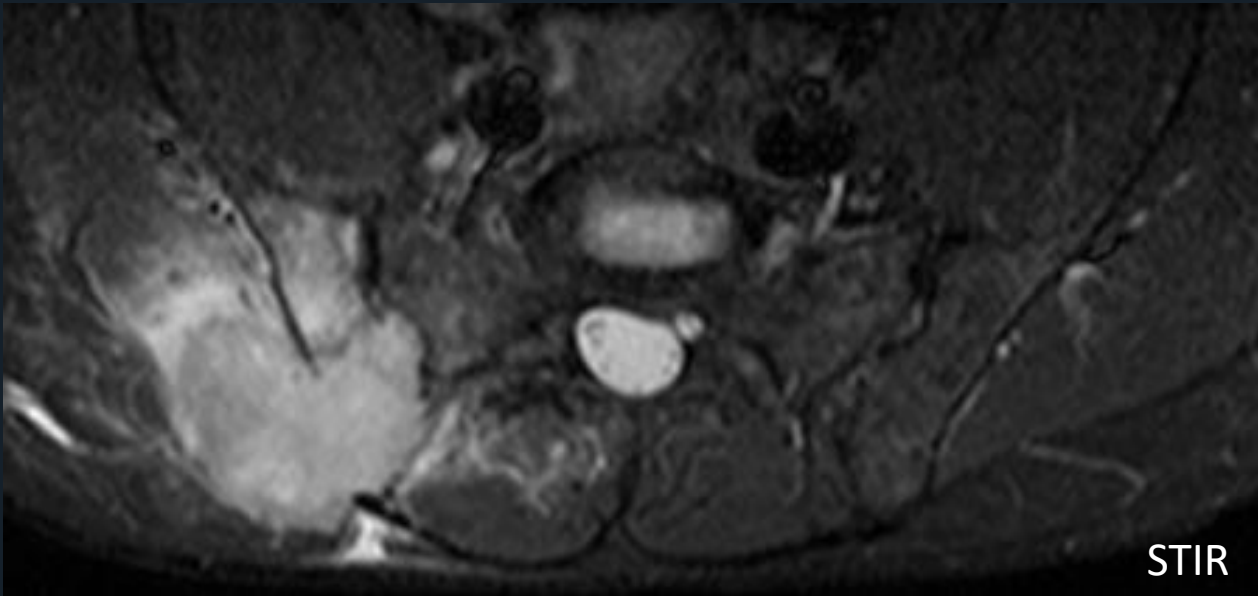
Multiple
Myeloma



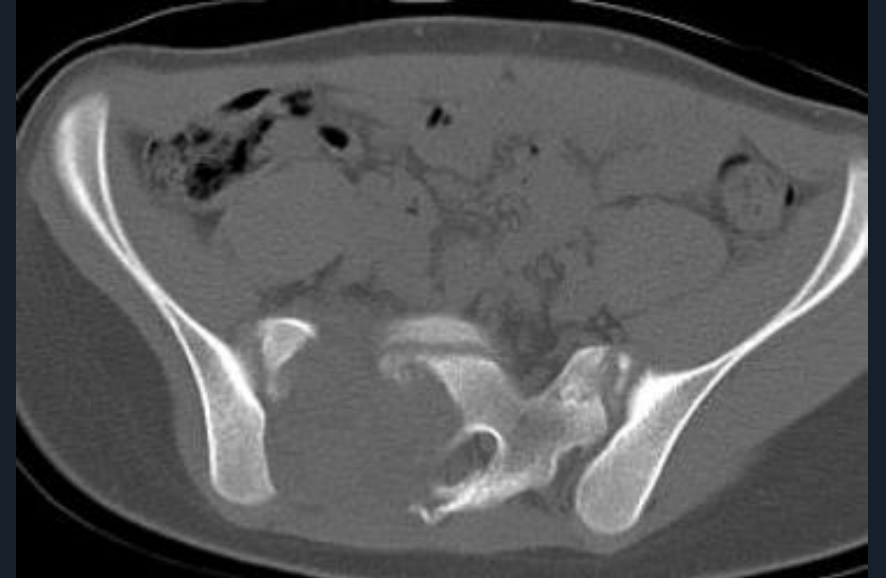
44M - pelvic/buttock pain

Neoplastic

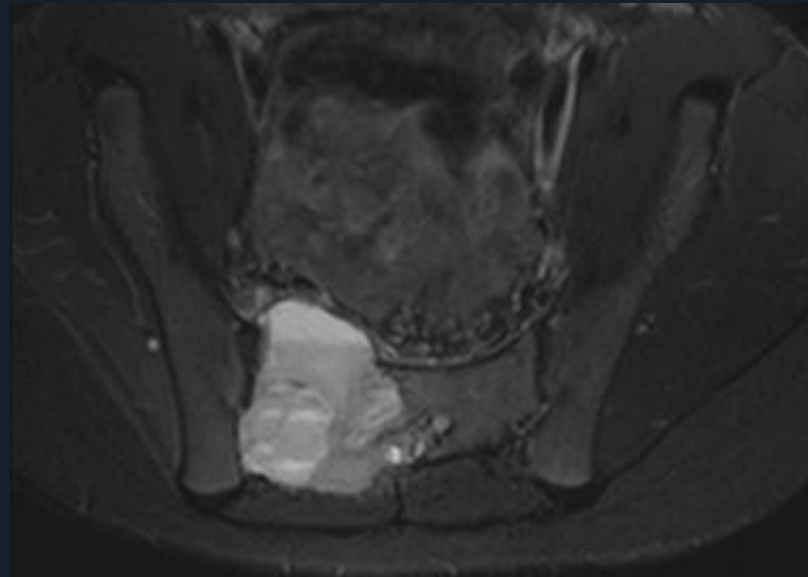
Mets of unknown origin



12M - cystic
lesion



ABC

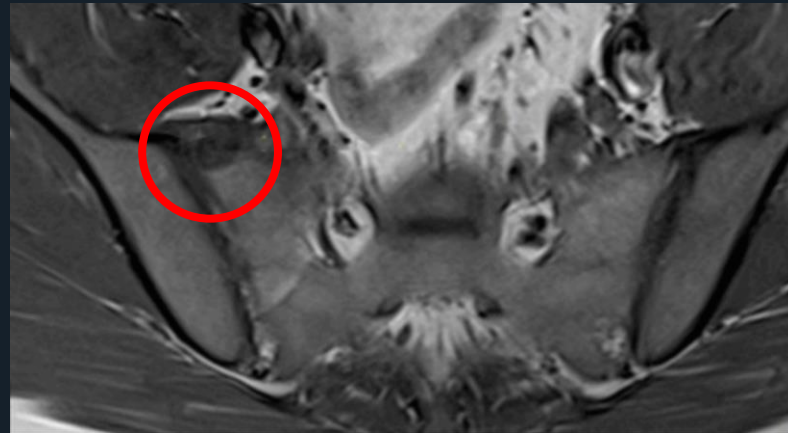
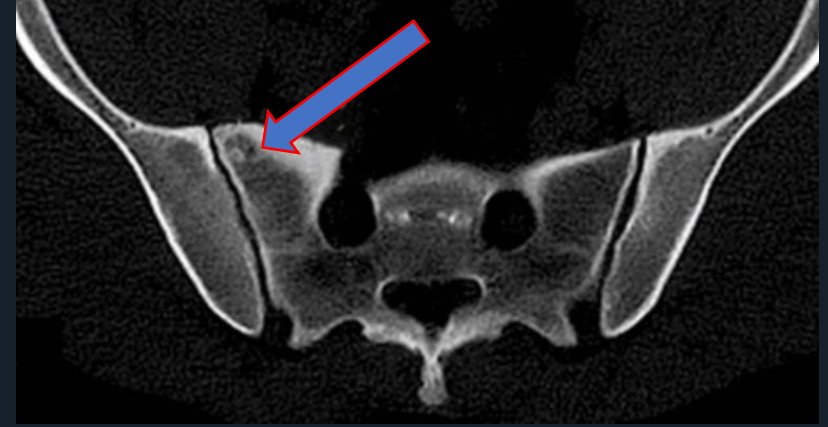
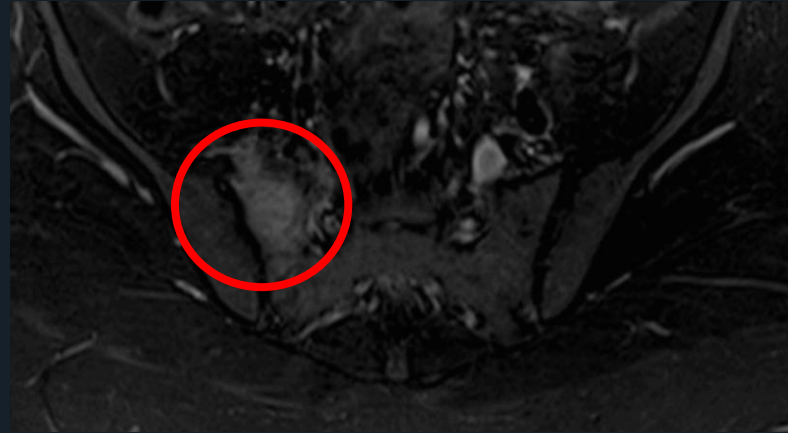


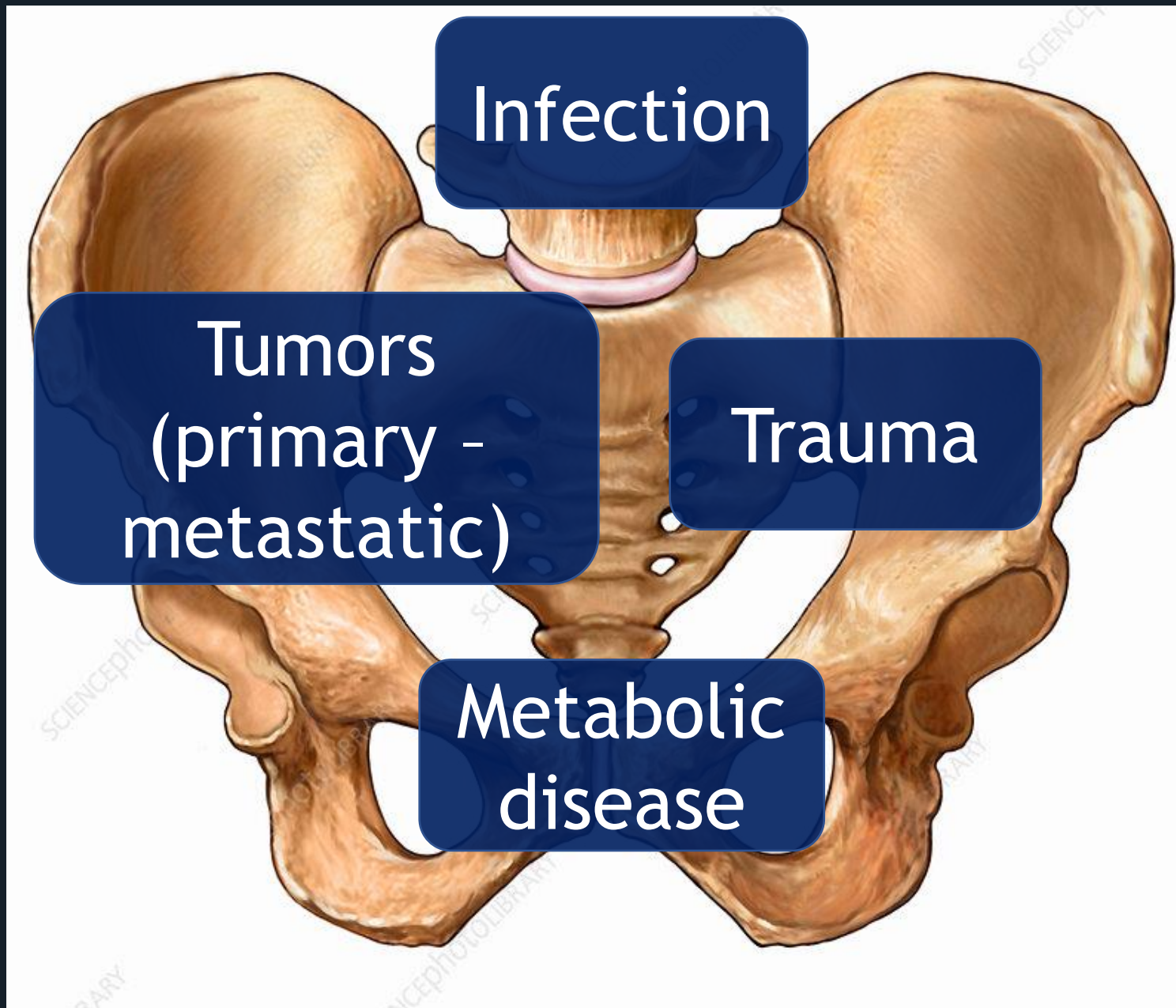
Neoplastic

29M - low back pain, max at night,
excellent response to NSAID

Neoplastic

Osteoid
osteoma





Infection

Tumors
(primary -
metastatic)

Trauma

Metabolic
disease

Conclusions

- Multiple bone related conditions can mimic sacroiliitis
- DDX based on: **history - history - history** + imaging

Thank you!!!



When you realize that numerous entities
can be confused with sacroiliitis