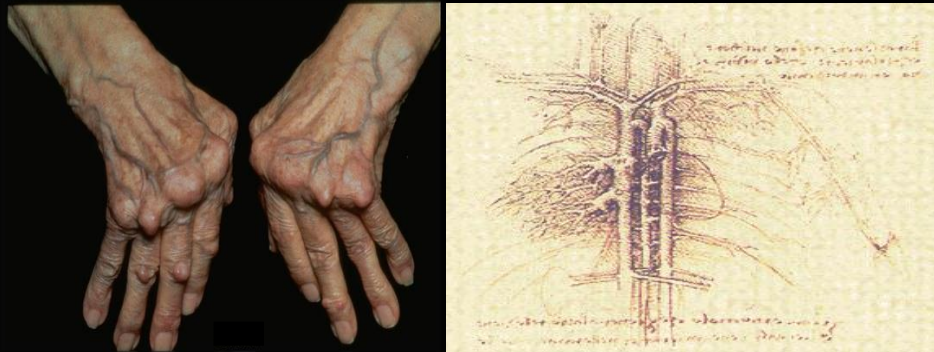
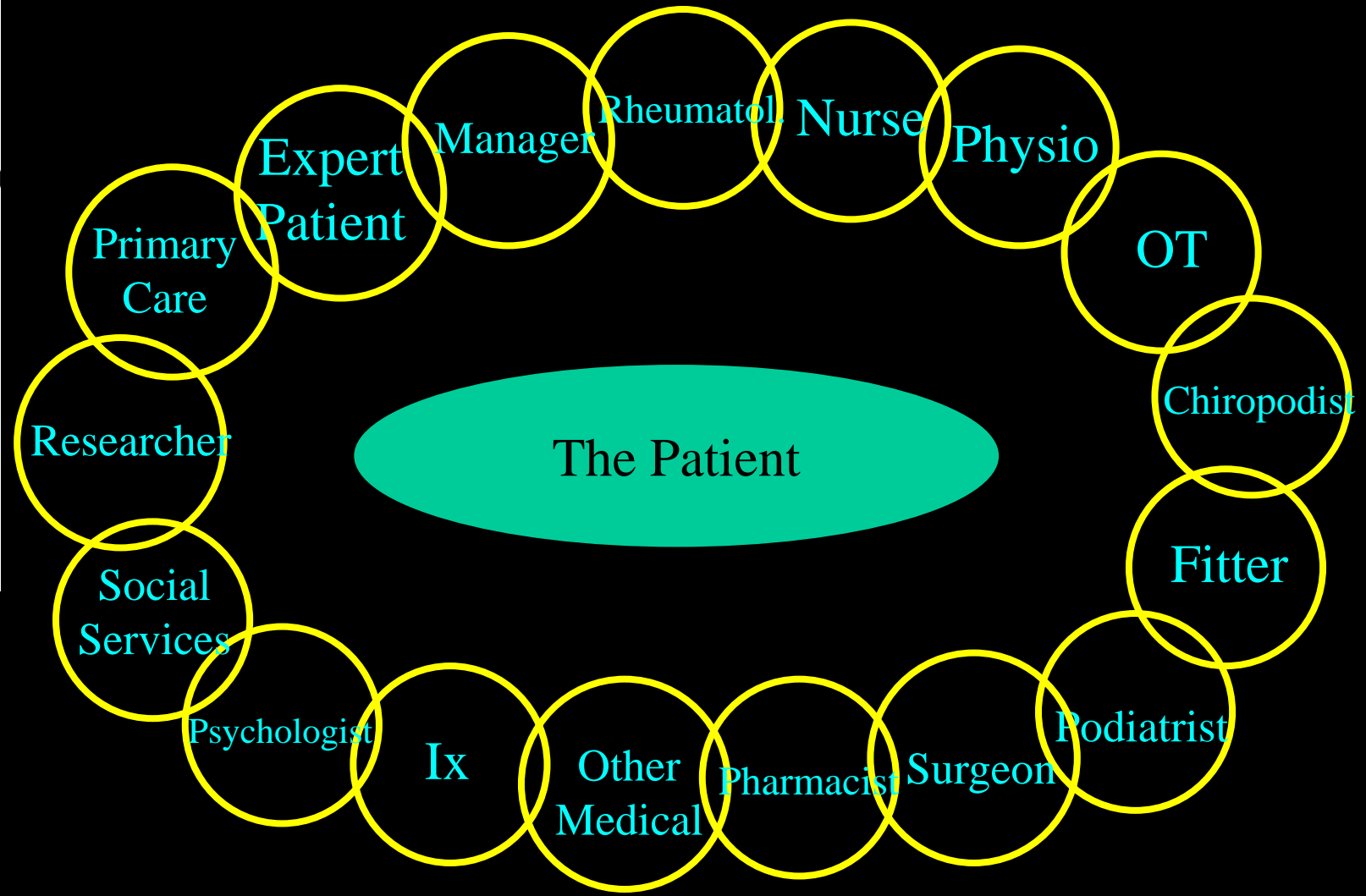
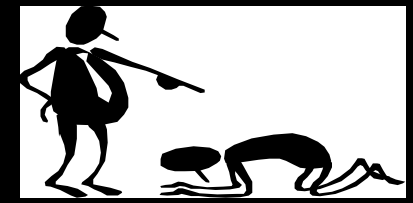


EPEMY, RHODES 1/10/2022

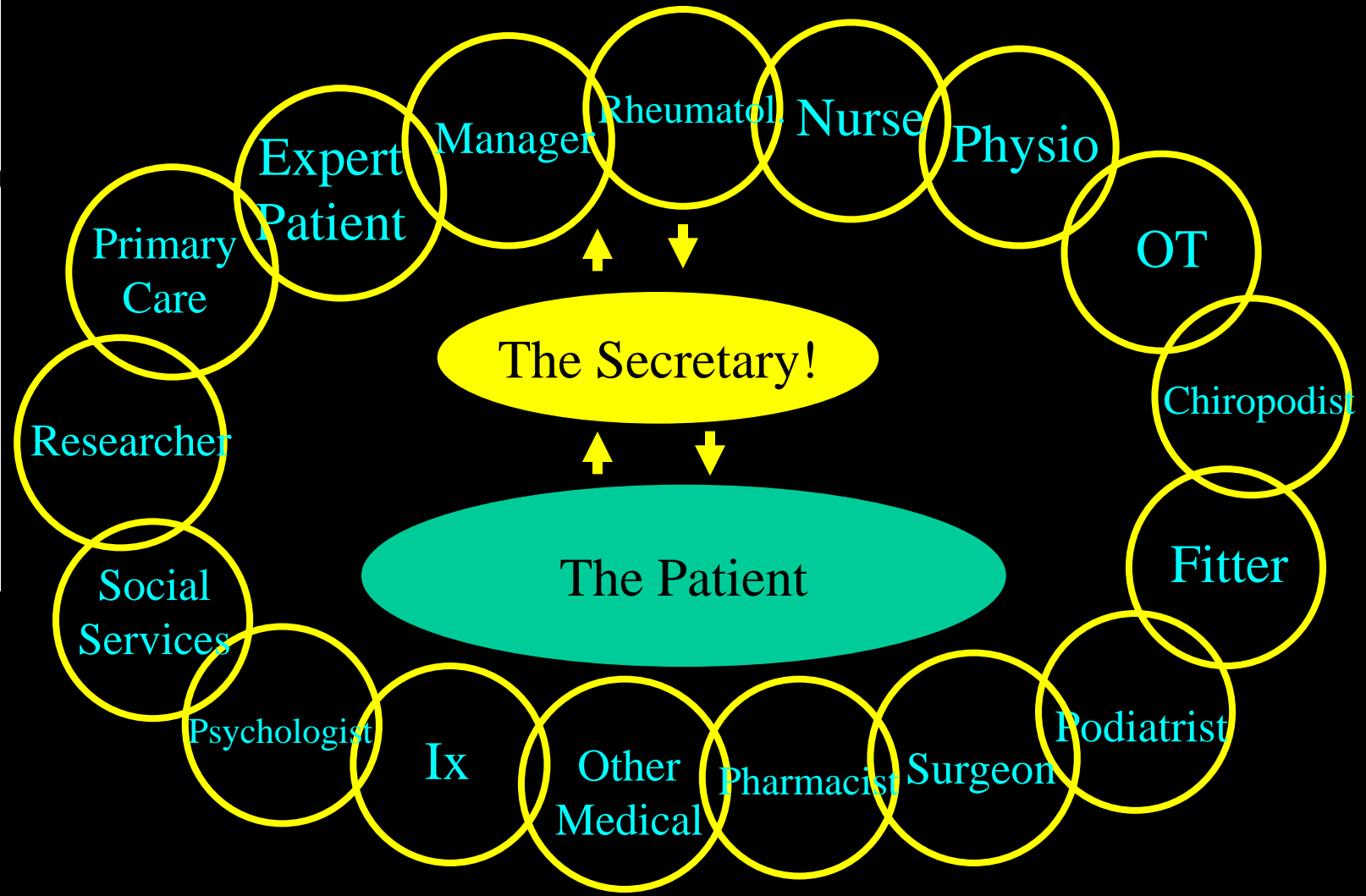
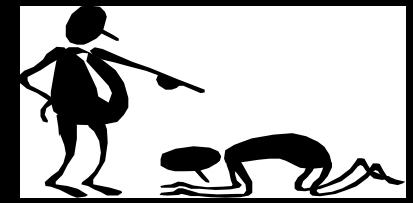
Multidisciplinary Care Pathways For Patients with Chronic Arthritis



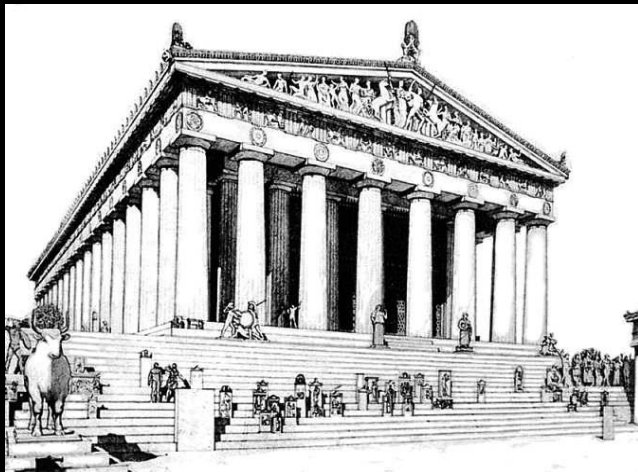








Constructing a multidisciplinary care pathway



What do we need?

- What is wrong with current care pathways (if they exist...)
- Understanding some other problems of relevance
- A few important generic items



What do we need?

- What is wrong with current care pathways
- Some other problems of relevance
- A few other important items



1. Resources / Settings

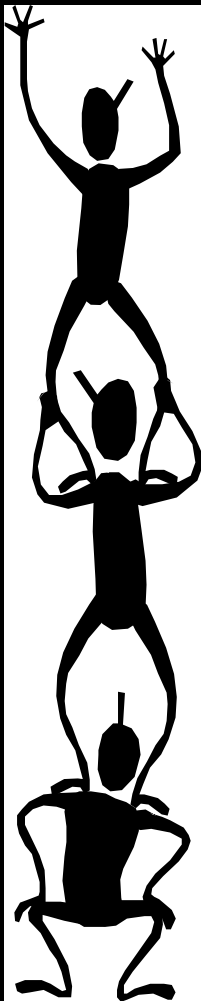


3° CARE

2° CARE

1° CARE

Resources / Settings



PATIENT

3^o CARE

ACADEMIA

FAMILY

2^o CARE

PHARMA

COMMUNITY
SOCIETY

1^o CARE

PATIENT
GROUPS

2. Patient Journey

Early disease

Established
disease

Intervention

Diagnosis

Patient Journey

Premorbid
Period

Early disease

Established
disease

First Symptoms

Intervention

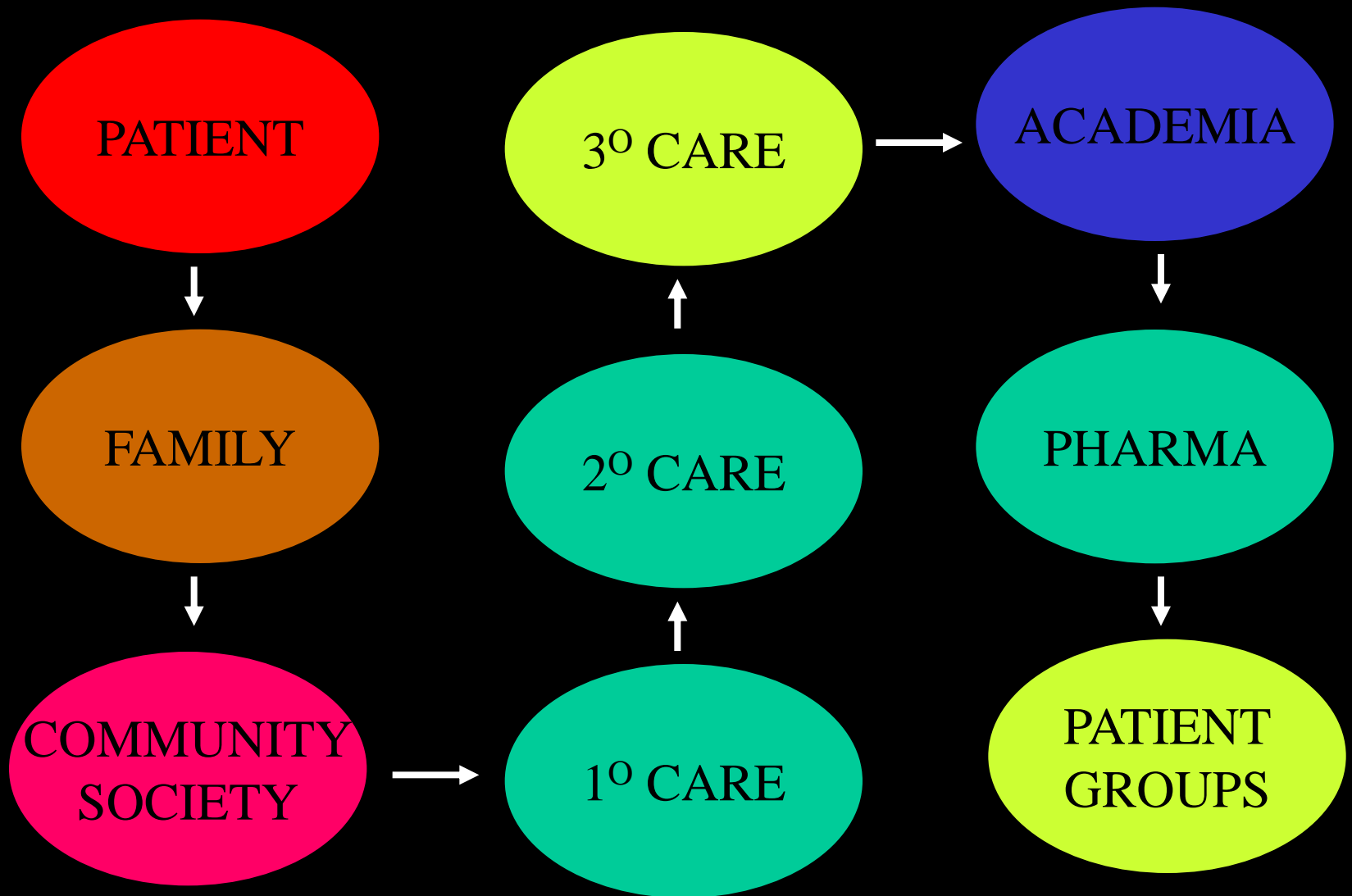
Accumulating
comorbidities

Pre-diagnosis

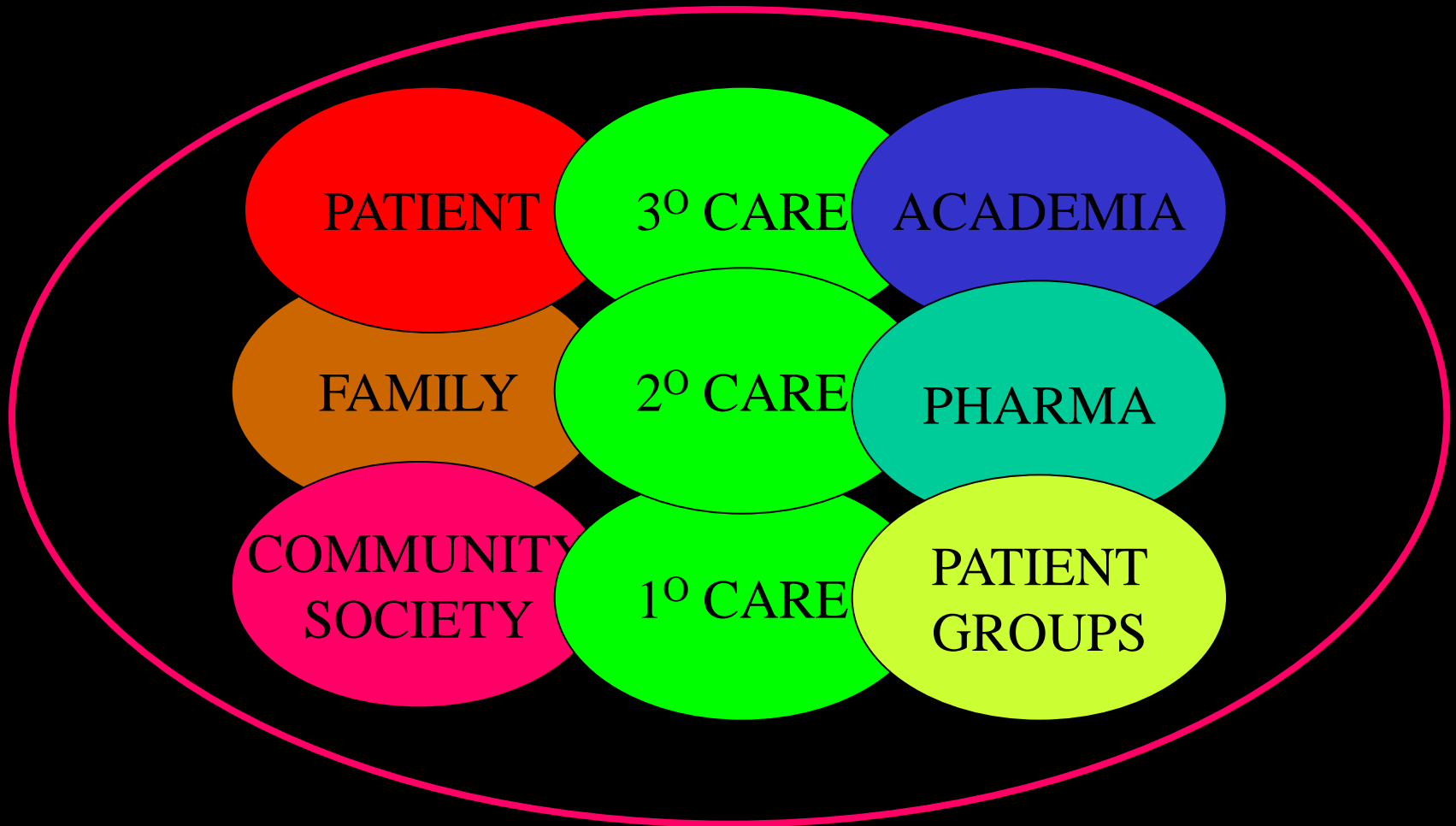
Diagnosis

Sequelae

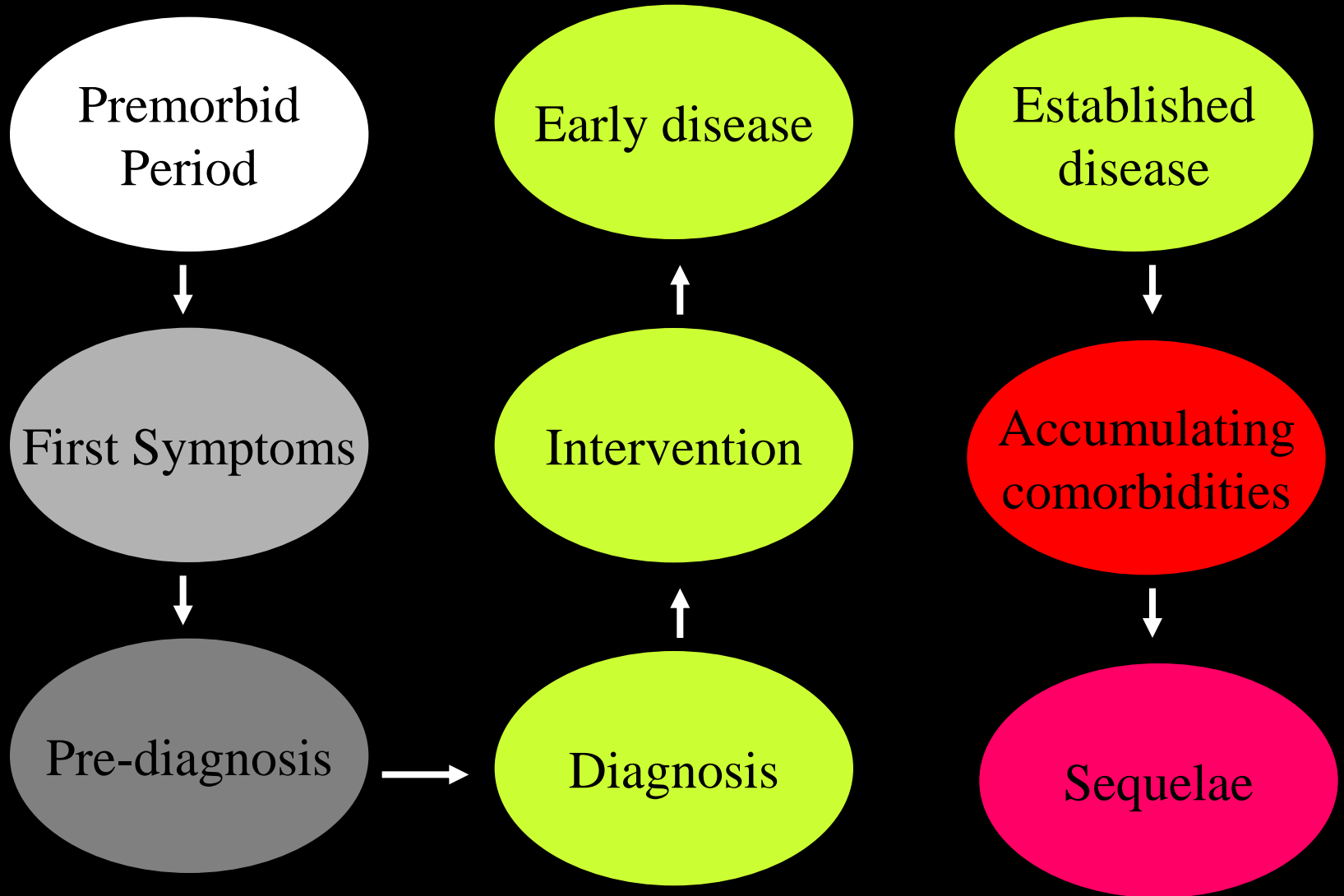
3. Linear Models



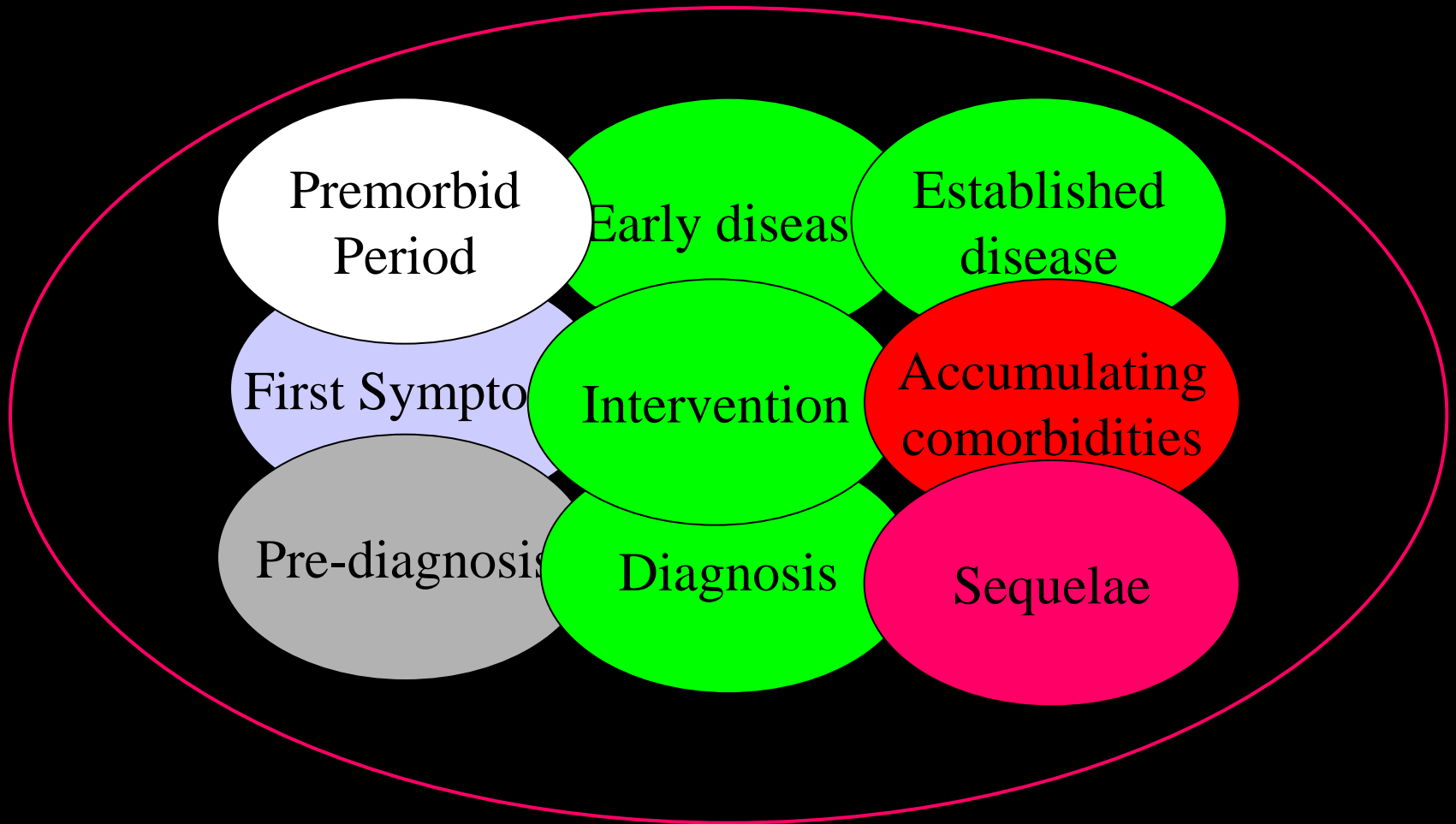
Linear Models



Linear Models



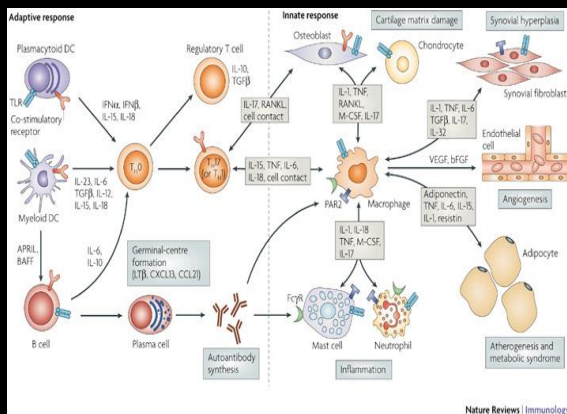
Linear Models



4. Bio-medical, -physical, -therapeutic models within 1⁰ and 2⁰ care settings

- Doctors
- Nurses
- Physiotherapists
- Occupational therapists
- Podiatrists
-

- Analgesics
- NSAIDs – Coxibs
- DMARDs
- Biologics
- Physio / OT
-



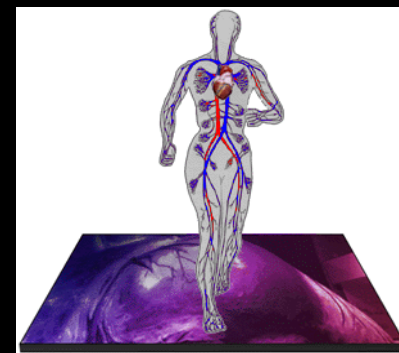
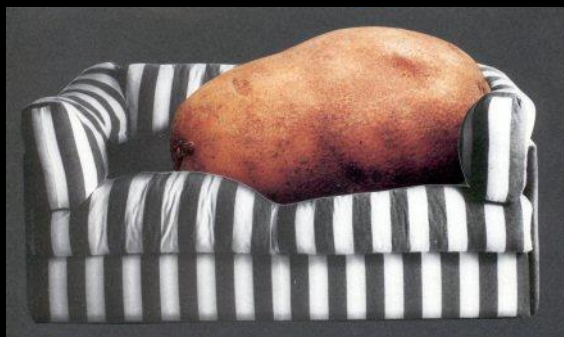
Smoking



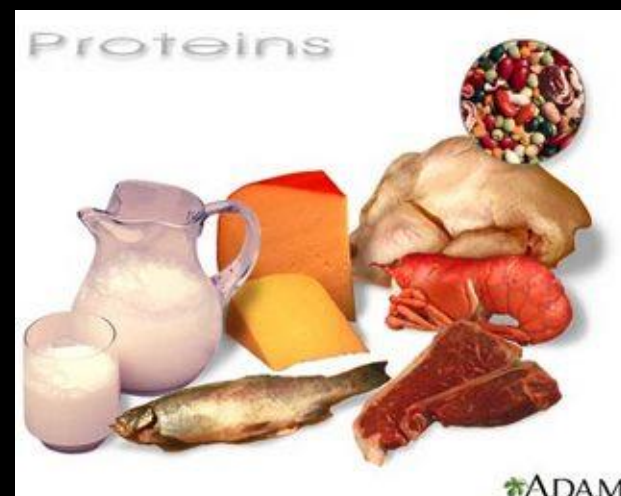
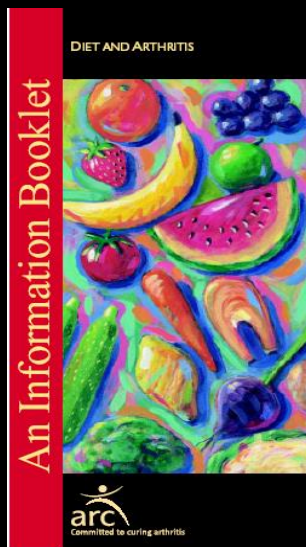
Obesity – Body composition



Physical Activity

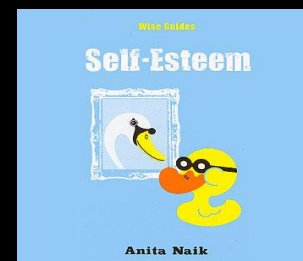
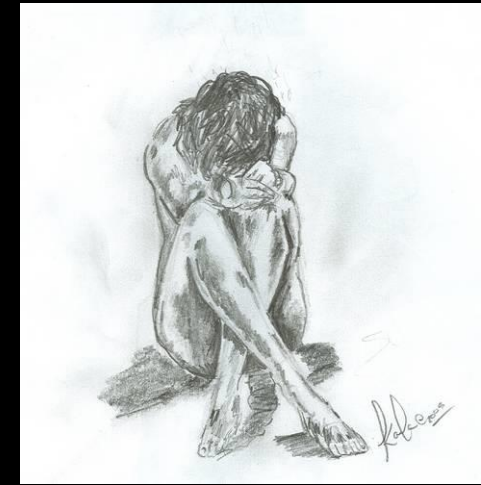


Diet



The Psychosocial Dimension

- Mental Health: Anxiety and Depression
- Loss of personal control - Lack of independence - low self esteem
- Guilt (inadequate parent/partner/homemaker)
- Grief (e.g. from loss of functional ability)
- Extended social contacts and friendships
- Maintenance of gainful employment



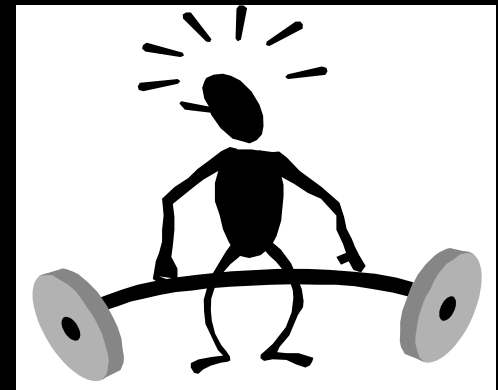
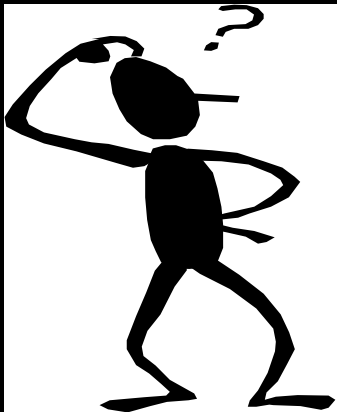
Patient Perspective: Lay beliefs making sense of the situation

Health → Illness



Lay beliefs

an attempt to explain the cause and to cope with the consequences of illness



5. Primary condition vs. comorbidities

- **Physical co-morbidities**

- CVD
- Osteoporosis
- Infections / Cancers
- Diabetes
- Chronic renal impairment
- Hypothyroidism
- ...

- **Psychological comorbidities**

- Depression
- Anxiety

- **Social comorbidities - behaviours**

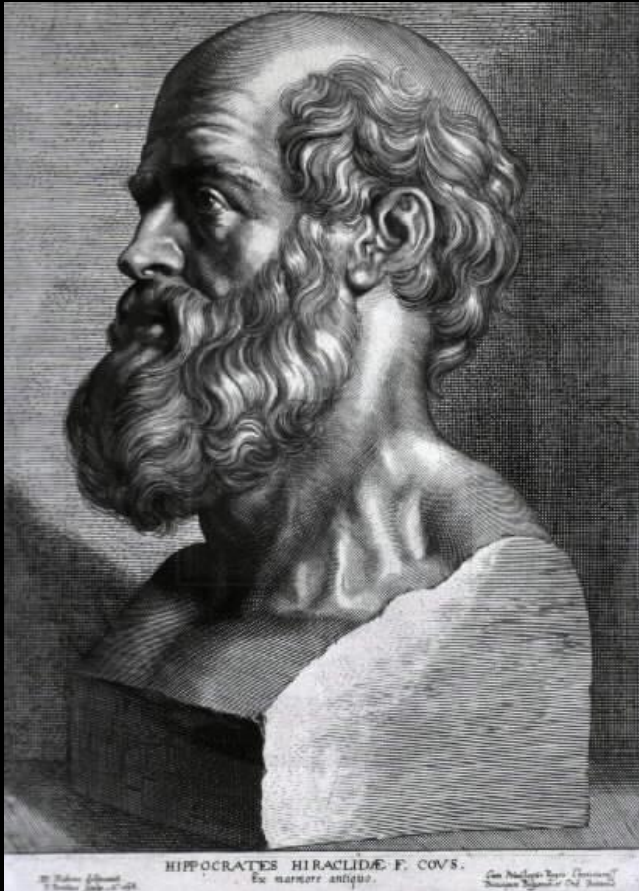
- Sedentarity
- Overindulgence
- Isolationism
- Benefits culture
-

What do we need?

- What is wrong with current care pathways
- **Some other problems of relevance**
- A few other important items



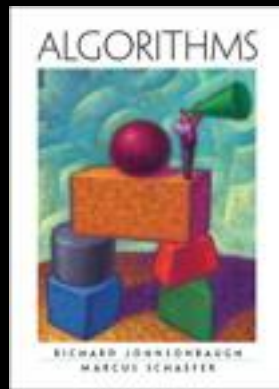
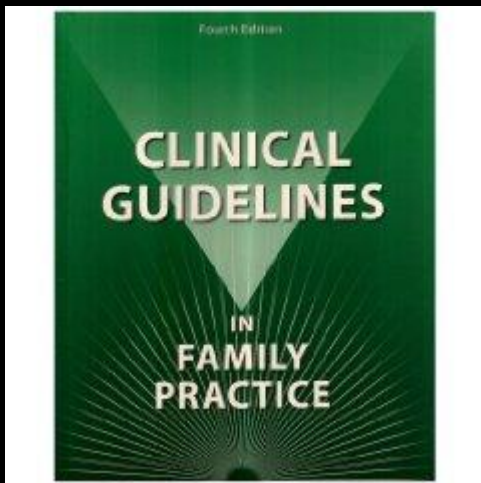
“the patient should be
the focus of care”

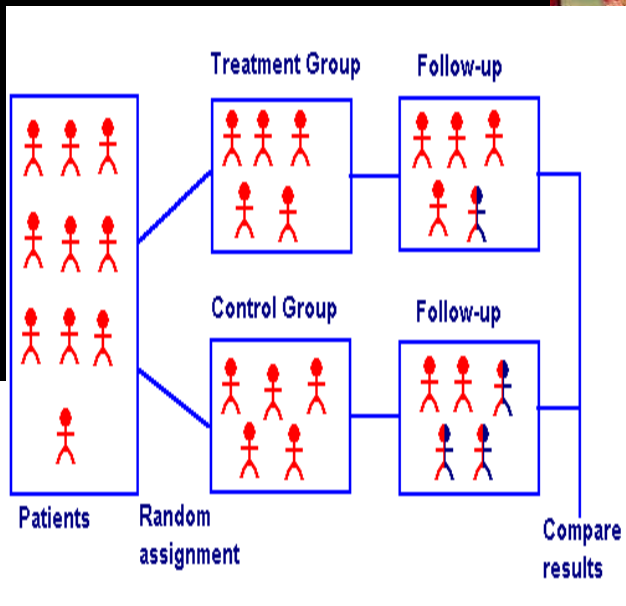
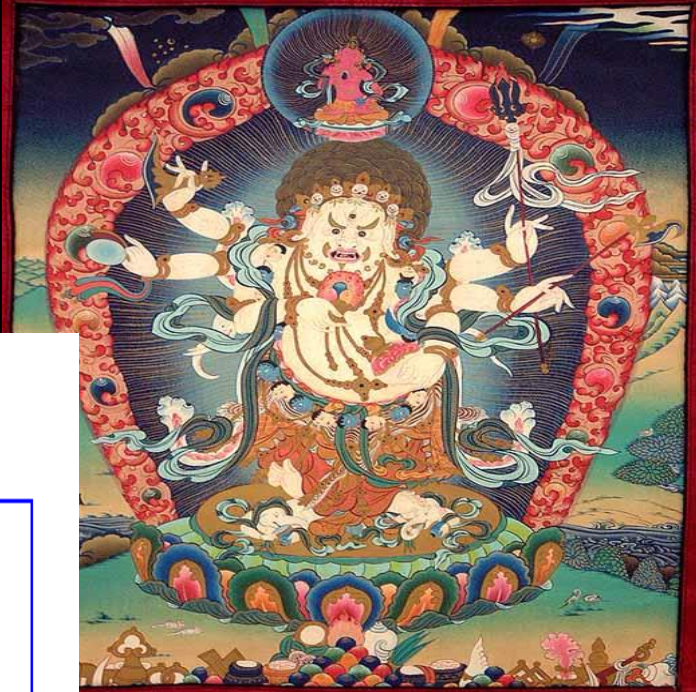




- Problem-oriented
- Disease-oriented







Clinical Research





Key Performance Indicators Manual

A practical guide for the Best Practice development, implementation and use of KPIs

George Miltenyi

Version - June 05



What do we need?

- What is wrong with current care pathways
- Some other problems of relevance
- A few other important items



What do we need?

- Overarching principles

- e.g.
- Focus on the person
- Focus on wellness
- Local context
- Optimal resource utilisation
- Care close to home
- Equitable access to care
- Affordability
-

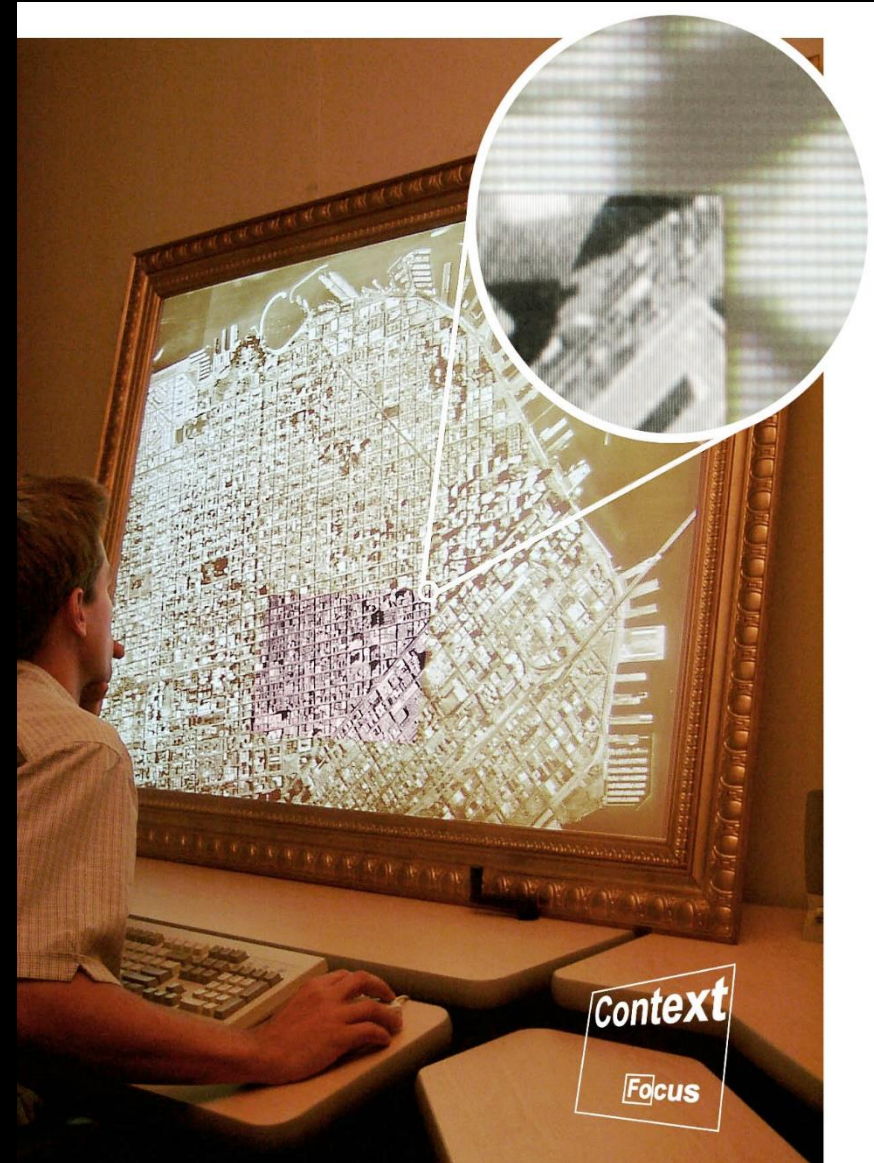
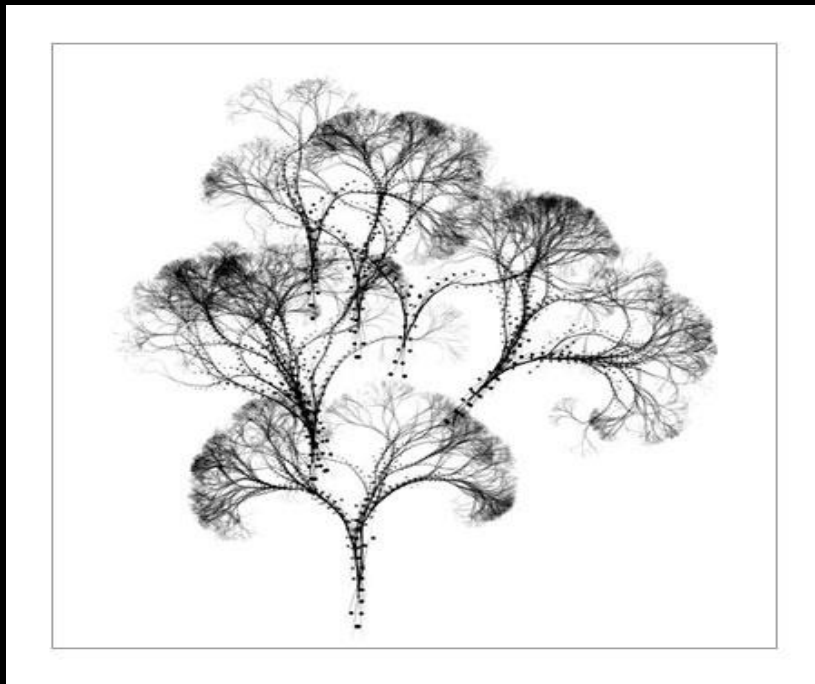
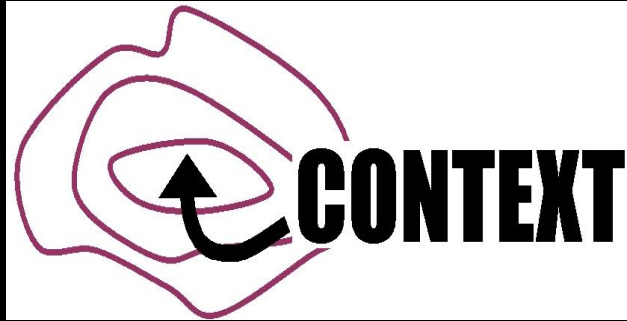


What do we need?

- Focus



What do we need?



What do we need?

- Identify needs
- Identify resources
- Identify barriers
- Use common sense
- Local relevance



What do we need?



- Patient needs
- Health professional needs
- System needs

What do we need?

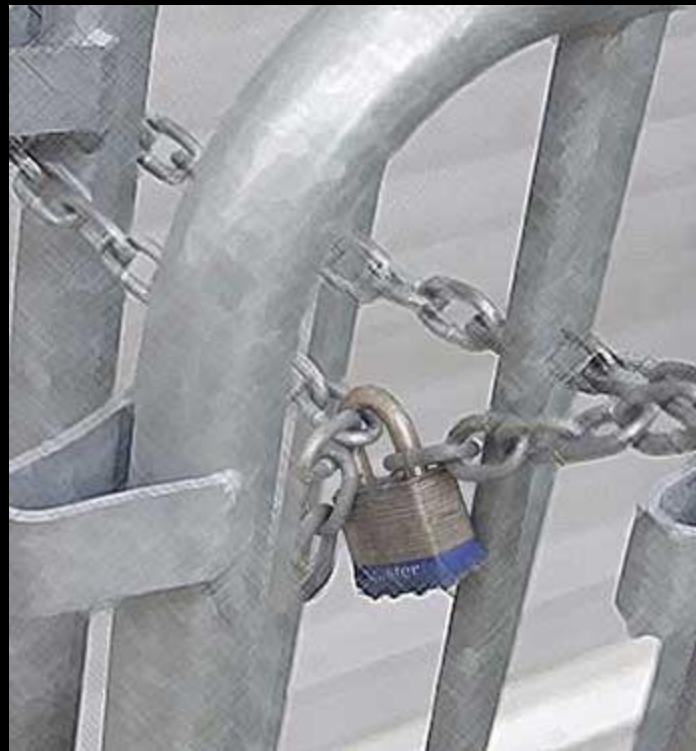


BARC

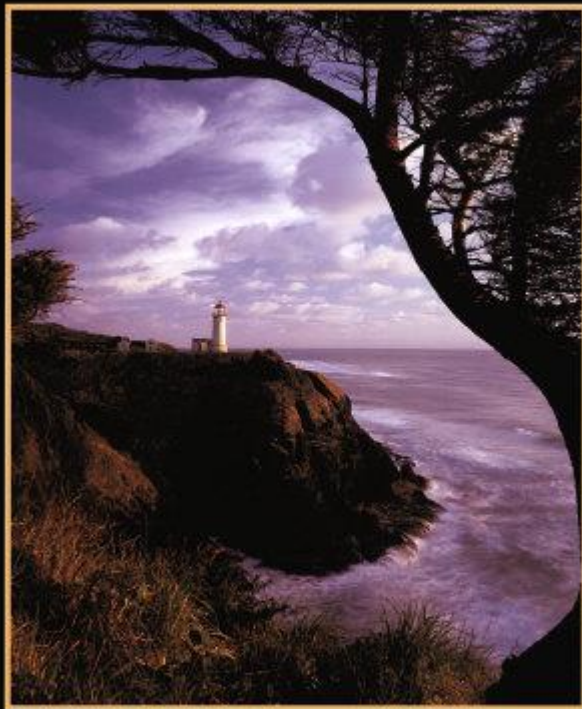
Birmingham Arthritis Resource Centre

What do we need?

Barriers



What do we need?



VISION

Effort and courage are not enough without purpose and direction.



AMBITION

Many of life's failures occur when people give up without realizing how close they are to success.

What do we need?



What do we need?



LEADERSHIP

The leader always sets the trail for others to follow.



LEADERSHIP

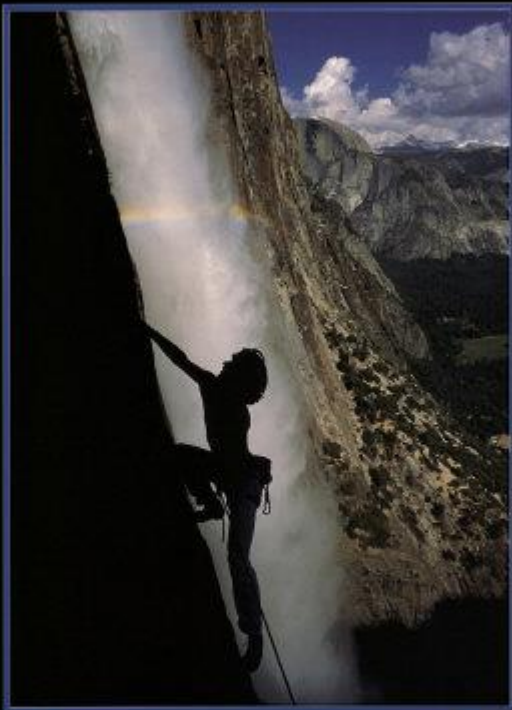
Leadership is unlocking people's potential to become better.



What do we need?



What do we need?



© Original Artist
Reproduction rights obtainable from
www.CartoonStock.com



"I couldn't resolve the conflict with the giant,
so I severed the channels."

PERSEVERANCE
You can't let go and still win.

What do we need?



What do we need?

- An appreciation that the term “care pathway” is a misnomer.
- This is all about us finding (again) our way...
- and then I am sure patients will find theirs.



CAMERON MACKINTOSH and THE MANHATTAN THEATRE CLUB

present

JULIE ANDREWS

STEPHEN COLLINS

CHRISTOPHER DURANG

MICHAEL RUPERT

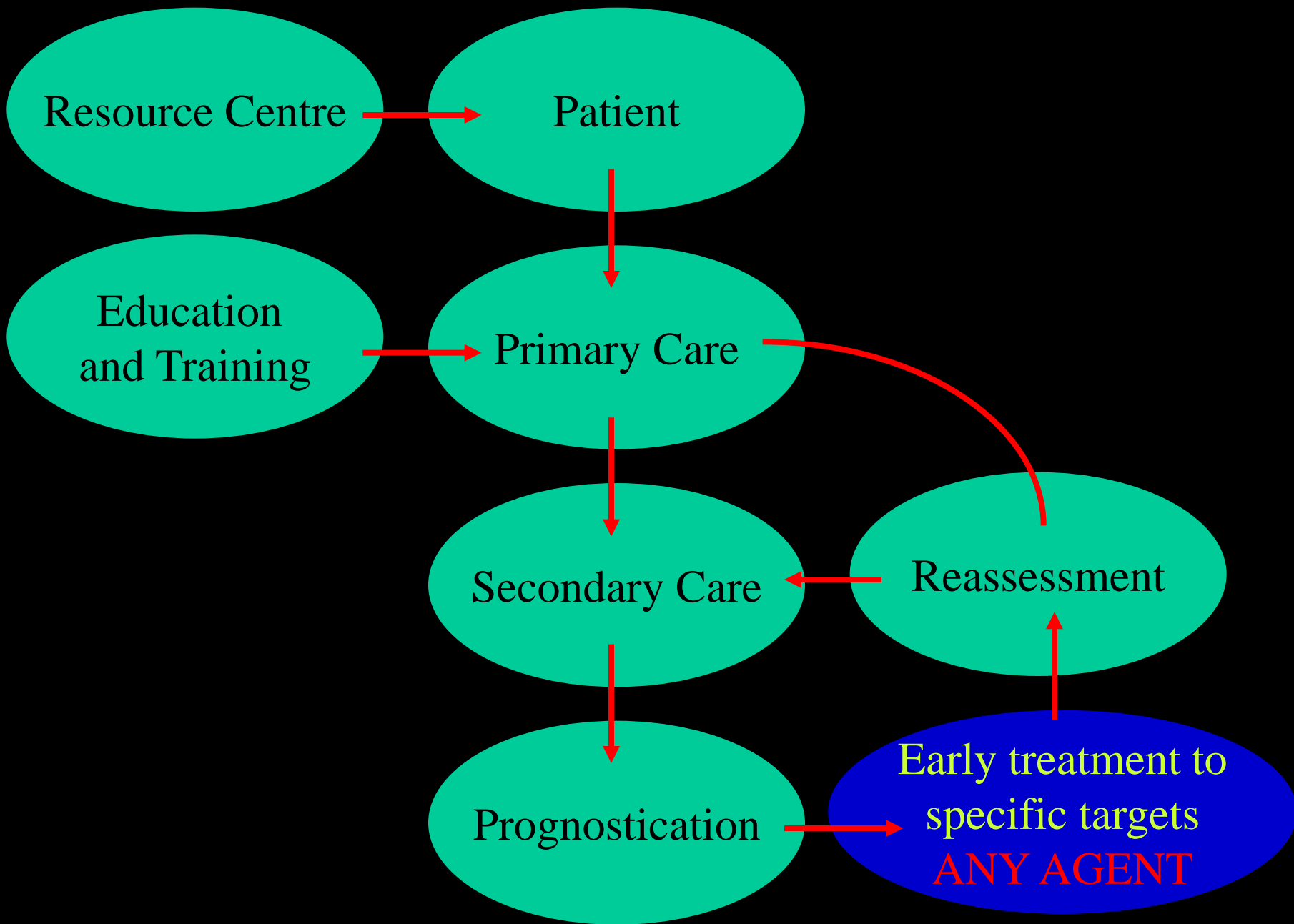
RACHEL YORK

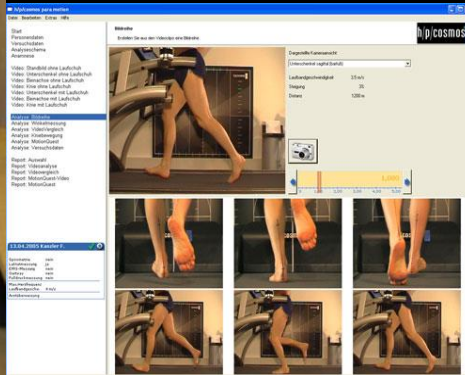
Sondheim
PUTTING IT
TOGETHER



ORIGINAL CAST RECORDING

2 CD SET





Other “modules”

Occupational Health
assessment

Comorbidity
Assessment and
treatment

Specialised resources
e.g. MS US

Smoking cessation

Continuing education
and counselling

Physical activity
Exercise

Psychological
support

Dietary – Nutritional
advice

Other quality issues

Access

Robust monitoring

Accessibility

Research active

Equity

Superspecialist services



El Greco



El Greco



Guido Rocha